



Smart options for everyday trips

Ride & Roll with Ease this Winter

Tips for Planning Trips by Bus and Bike

RoundTrip Program Webinar | November 13, 2024

11/13/2024

A program of the Greater Madison MPO.

Welcome!

1. This webinar is being recorded.
2. This webinar supports automated closed captions.
 - › To start automated captions, select “Show Captions” from the menu bar at the bottom of your screen.
3. Put questions in the **Q&A** at any time.
4. Have your phone handy if you like QR codes.
5. We love to see who’s here! Feel free to introduce yourself & what brings you here today in the chat.



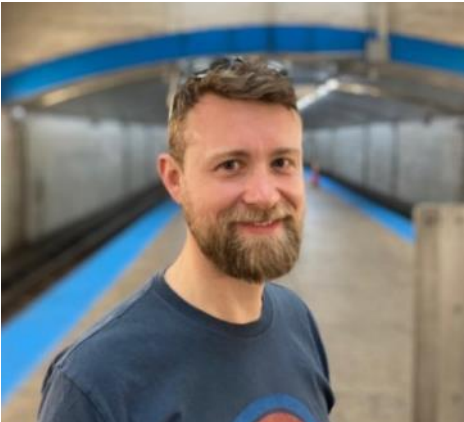
A program of the Greater Madison MPO.

Today's Goals

1. You'll leave with a **basic understanding of the tools available** to help you plan trips via bike and bus.
2. You'll learn about **resources to help you combine bus and bike trips** to go further faster.
3. You'll **gain useful insights and leave with greater confidence.**
4. You'll **be inspired to try something new!**



Our Panelists



Chris McCahill



Colleen Hayes



Kai Brito



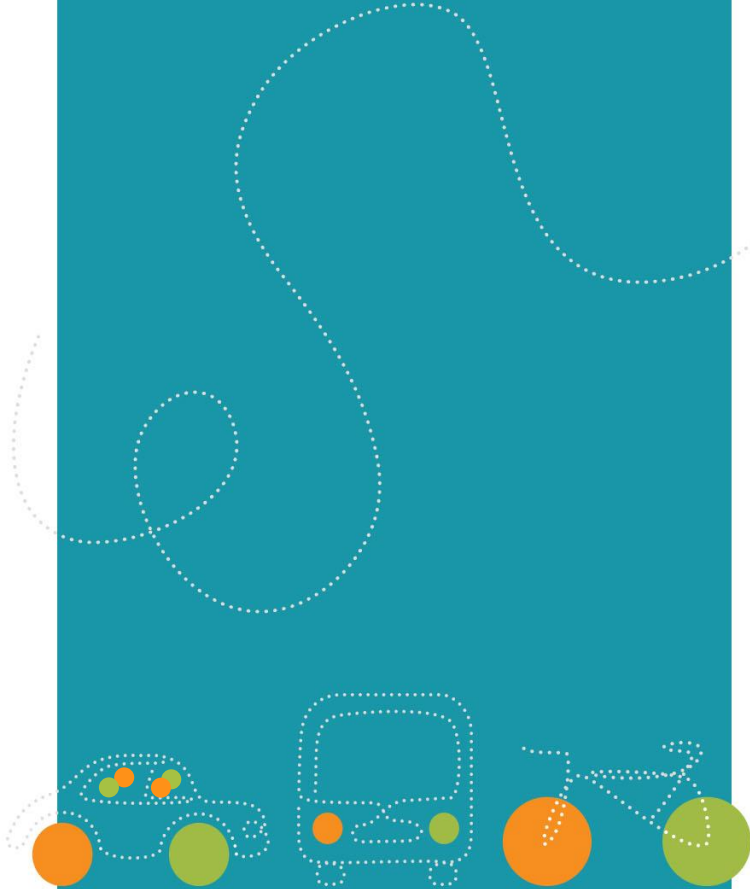
Uriel Reyes



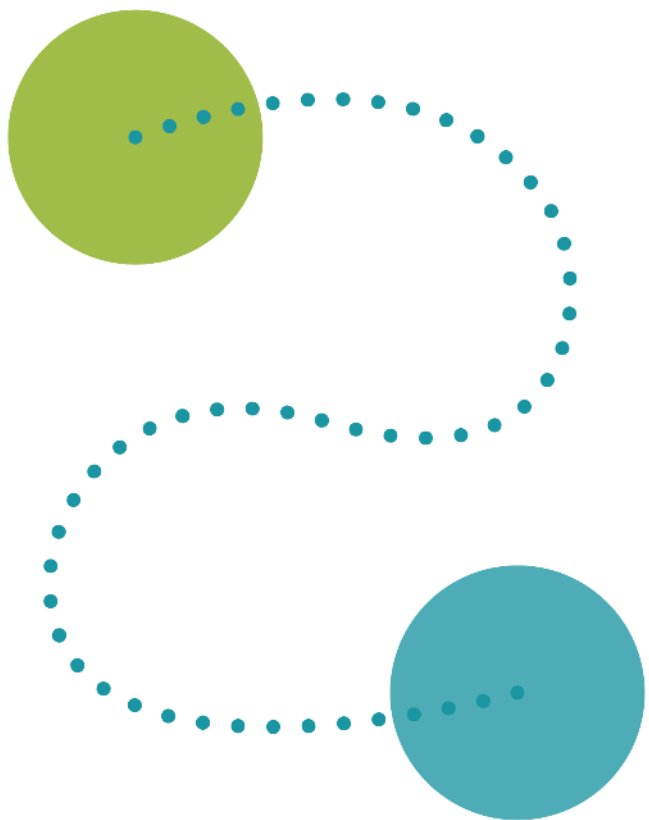
Mary Ebeling

RoundTrip

Smart options for everyday trips



A program of the Greater Madison MPO.



About RoundTrip

Mission

RoundTrip connects individuals and employers in the Madison region with convenient alternatives to driving alone.

RoundTrip is a free public program of the Greater Madison MPO.



What We Offer

- › **Individual Resources**
 - › Ride matching website
 - › Individual trip planning support
 - › Emergency Ride Home program
 - › Challenges & incentives
- › **Community Outreach and Education**
 - › Tabling at community events
 - › Support for area initiatives like Madison Bike Week and Week Without Driving
- › **Employer Assistance**
 - › Consultations
 - › Employee engagement
 - › Workplace ride-matching networks

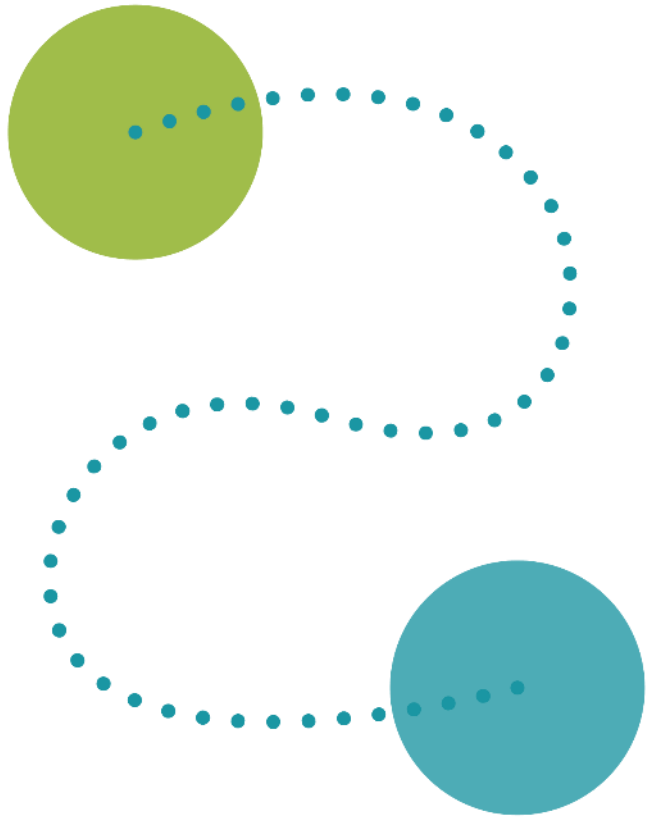




- › Carpool partners
- › Bikepool partners
- › Vanpool routes
- › Park-n-rides
- › Emergency Ride Home program
- › Challenges
- › Monthly newsletter



A screenshot of the RoundTrip website homepage. The top navigation bar includes links for HOME, EVENTS, MY DASHBOARD, PROGRAMS, MANAGE, GET MOVING, and EMPLOYERS. The main header features a large aerial photograph of Madison, Wisconsin, with the text "LOVE YOUR COMMUTE" and a sub-header "Connect with alternatives to driving alone in Dane County. RoundTrip is a public program of the Greater Madison MPO." Below this is a search bar with "A Start" and "B Destination" input fields and a "LET'S GO!" button. The main content area is divided into three columns: "EMERGENCY RIDE HOME PROGRAM" with a "LEARN MORE" button, "SMART TRIPS CHALLENGE RESULTS" with a "SEE RESULTS" button, and a section for the "Commute Tracker App" with "Available on the App Store" and "GET IT ON Google play" logos.



Going by Bus and Bike – A Few Things to Expect

Fare Payment

- › All buses now take the new Fast Fare tap cards.



<< **Optional:** Download Metro's Fast Fare app to load money online and be covered if your card is lost.



What to Expect at BRT Stations



Combining Bike + Bus Trips

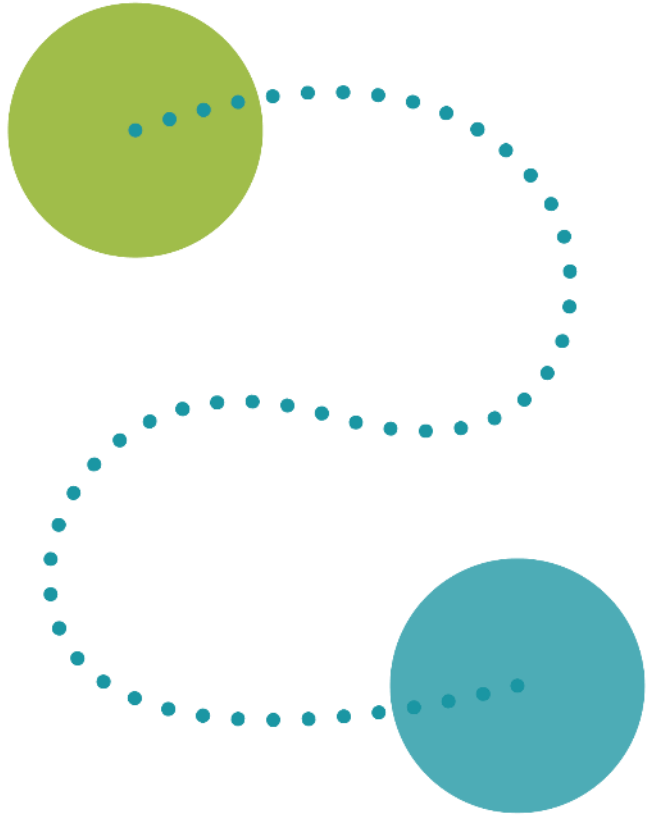


City of Madison Winter Resources

- ✓ Biking in Winter
- ✓ Metro Transit Winter Travel Tips
- ✓ Sign up for Metro service alerts
- ✓ Report a problem
 - Bike path issues
 - Snow at bus stop
 - Snow on sidewalk
- ✓ And more!



Photo: Robbie Webber



Trip Planning Tools



Google Maps



transit



metro transit



GREATER MADISON
mpo

Google Maps | Bus Trip



Best 5 min 12 min 20 min 7 min

100 State St, Madison, WI 53703

Breese Stevens Field, 917 E Mifflin St, Ma

Leave now

Options

Send directions to your phone Copy link

Time	Duration
11:32 AM—11:44 AM	12 min
11:37 AM—11:51 AM	14 min
via E Mifflin St	20 min 0.9 mile

12 min every 15 min

Today	Leave	Arrive	Last
August	9	2021	
September	10	2022	
October	11	2023	
November	12	2024	
December	13	2025	
January	14	2026	
February	15	2027	

Cancel Done

Google Maps | Bike Trip



Mode Selector: Best (5 min), 20 min, **Bike (7 min)**

Route Summary: 13 min (2.2 mi) Best route

Terrain Profile: Mostly flat (+39 ft, +72 ft)

Steps:

- Your location
- Head east on State St toward N Carroll St (+7 ft incline)
- 200 ft Turn right onto N Carroll St (+26 ft incline)
- 0.1 mi Turn right onto S Hamilton St

Map Labels: 100 State Street, N Broom St, N Henry St, E Mifflin St, State-Langdon, Madison Children's Museum, Hilton Madison Monona Terrace, Monona Terrace Community and...

Buttons: Start, Show map

Google Maps | Bike Trip



← from 100 State St, Madison, WI 53703
to Breese Stevens Field, 917 E Mifflin St, Madison, WI 53703

7 min (1.2 miles)
via E Mifflin St
↑ 33 ft · ↓ 72 ft

Use caution—bicycling directions may not always reflect real-world conditions

100 State St
Madison, WI 53703

- ↑ Head southeast on N Carroll St toward W Mifflin St
144 ft
- ↶ Turn left onto State St
69 ft
- ↷ Turn right onto N Carroll St
0.1 mi
- ↶ Turn left onto W Main St
0.1 mi

Search along the route

Restaurants Coffee Groceries Things to do

Verizon 2:34 PM 68%

Search here

Work Restaurants Coffee Shopping

Map type

- Default
- Satellite
- Terrain

Map details

- Transit
- Traffic
- Biking**
- Street View
- COVID-19 Info
- Wildfires
- 3D

Transit App | Bus & Bike Trips



9:59

Where to? 30 min

RAPID A
Eastbound

- 1 Sun Prairie via High Crossing 0 min
- 2 American Center 8 min
- 1 Sun Prairie via High Crossing 23 min

State

MADISON BCycle
Unlock a bike
Ian's Pizza on State

B
Northbound to Northport 14 minutes
State

F
Westbound to Junction via Middleton 20 minutes
Capitol Square

9:58

GO

Go at 10:10 AM
You'll arrive at 10:43 AM 34 min

EVERY 5-15 MINUTES

6 minutes

11:54

Go at 11:50 AM
You'll arrive at 12:03 PM 13 min

< 1 minute

MADISON BCycle

- W. Washington / Regent St. 8 docks 11:55 AM
- Ian's Pizza on State 6 e-bikes 11:51 AM

0.8 mi

Metro Transit Tools


1. Website
2. Customer Service (phone & in-person)



**Metro Transit How
to Ride**

[Set up your Fast Fare account!](#) Metro's new Fast Fare system is now live! To begin, set up your online account here.

metro transit Routes & Schedules Fares How to Ride Paratransit Detours Contact Search



Bus Tracker


Plan your trip, track your bus, and get real-time arrival info.

[Metro Bus Tracker](#)

Fast Fare


A new way to pay! Set up your online account to get started.

[How It Works](#) [Set Up Your Account](#)




[Routes & Schedules](#)

Find service maps and schedules for your route.




[Detours](#)

Current and upcoming detours and stop closures.



[Rider Tools & Apps](#)

Service alerts and mobile apps for trip info on the go.



[Accessible Services](#)

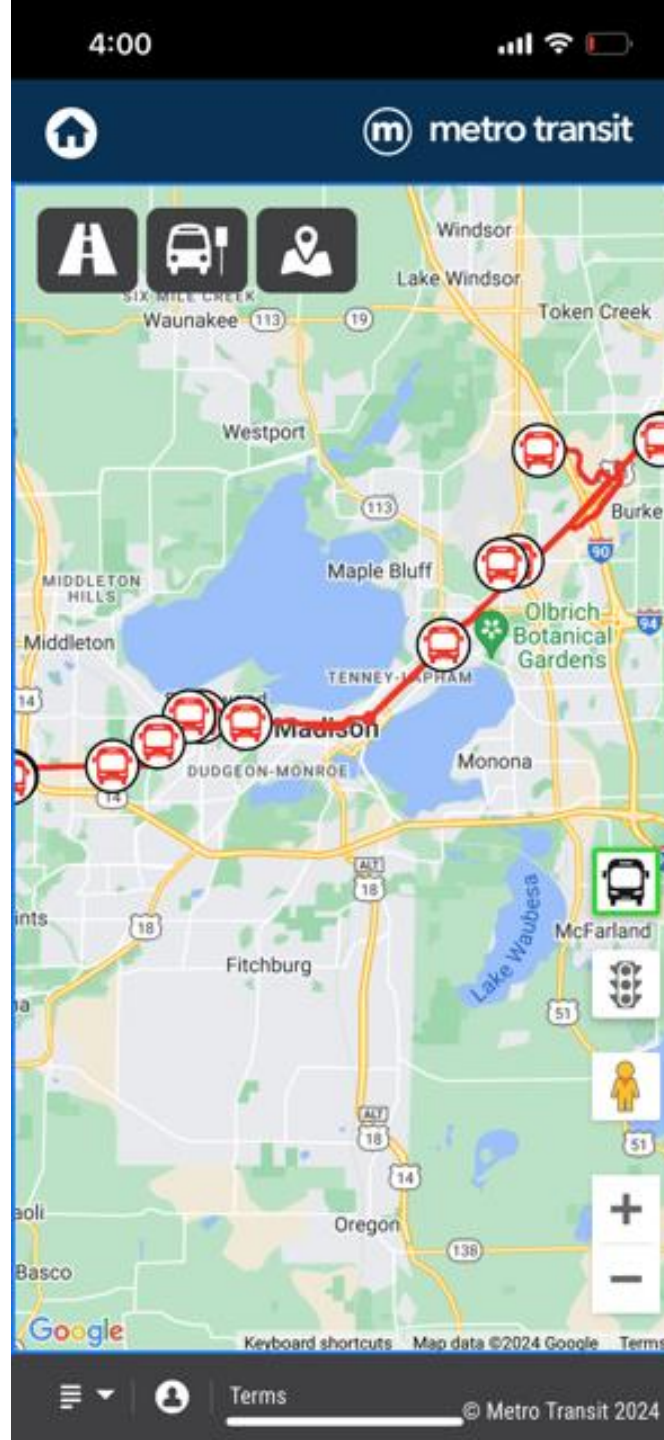
We're committed to providing accessible services.

Metro Transit Tools

3. Metro Bus Tracker



**Metro Transit Rider
Tools & Apps**



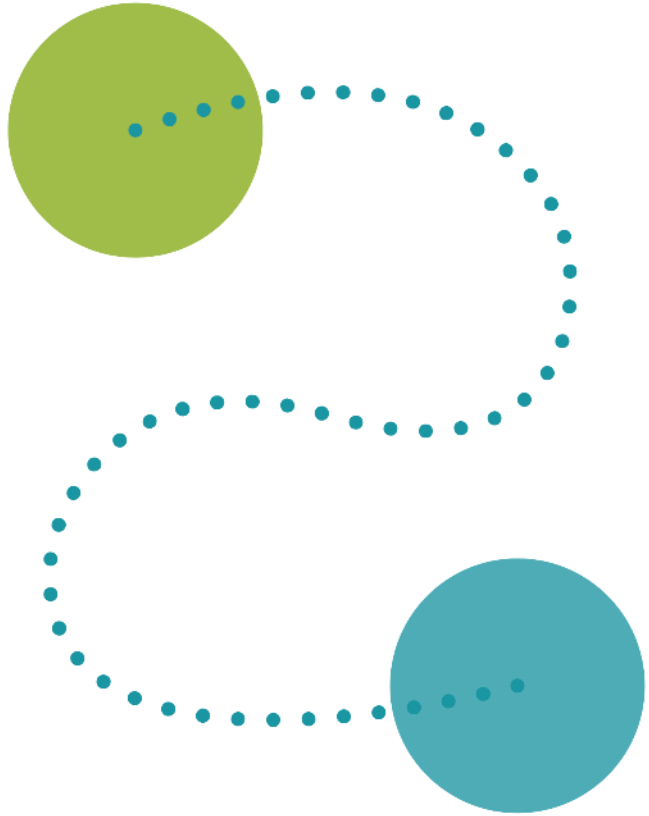
Bike Planning Tools in Dane County

- › Greater Madison MPO
 - › Dane County Bicycle Map
 - › Low Stress Bike Route Finder
 - › Story Map: Featured Bicycle & Pedestrian Trails in Dane County
 - › Links to other local, county and state bicycle maps
- › City of Madison
 - › Get Biking:
www.cityofmadison.com/bikeMadison



bitly

**Greater Madison MPO
Bicycle Resources**



Panel Discussion

Upcoming Events

- › Weekly Metro Transit Outreach Events
- › 11/14: Sun Prairie Community Conversation: “Reducing Our Reliance on the Car”
 - › Hosted by SPARC @ Colonial Club Senior Center, November 14, 6:30-8:00 PM
- › Connect with local groups: WI Bike Fed, Madison Bikes, Bike Fitchburg, Sun Prairie Moves
 - › 12/3: Madison Bikes Winter Bike Social, December 3, 5:30-7:30PM at Working Draft Beer Company.

>> Follow the Greater Madison MPO & RoundTrip program on Facebook: [@GreaterMadisonMPO](#)



Thank You

Zia Brucaya
RoundTrip Program Manager
Greater Madison MPO
RoundTripGreaterMadison.org
roundtrip@cityofmadison.com
(608) 266-7433 (RIDE)

