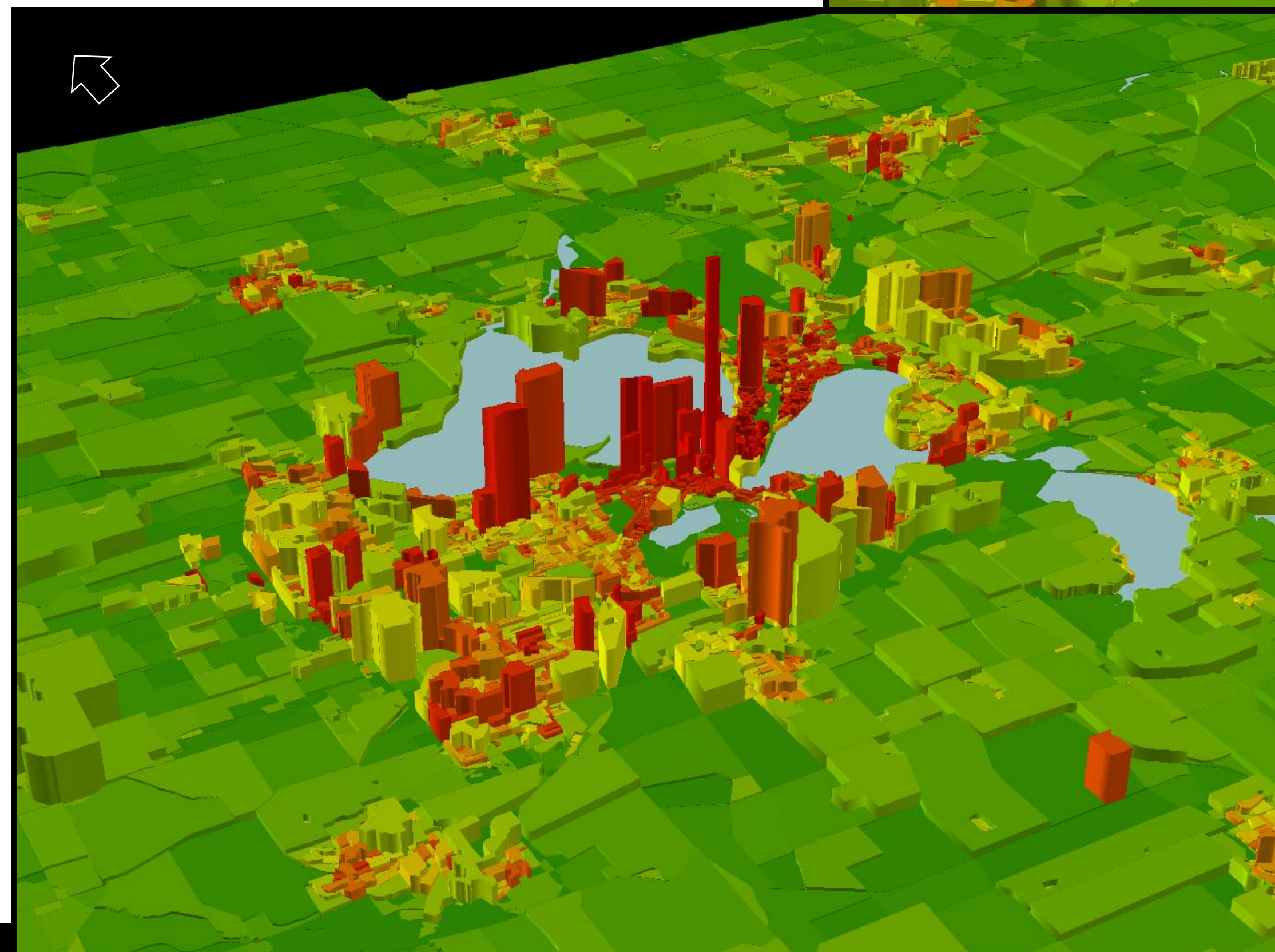
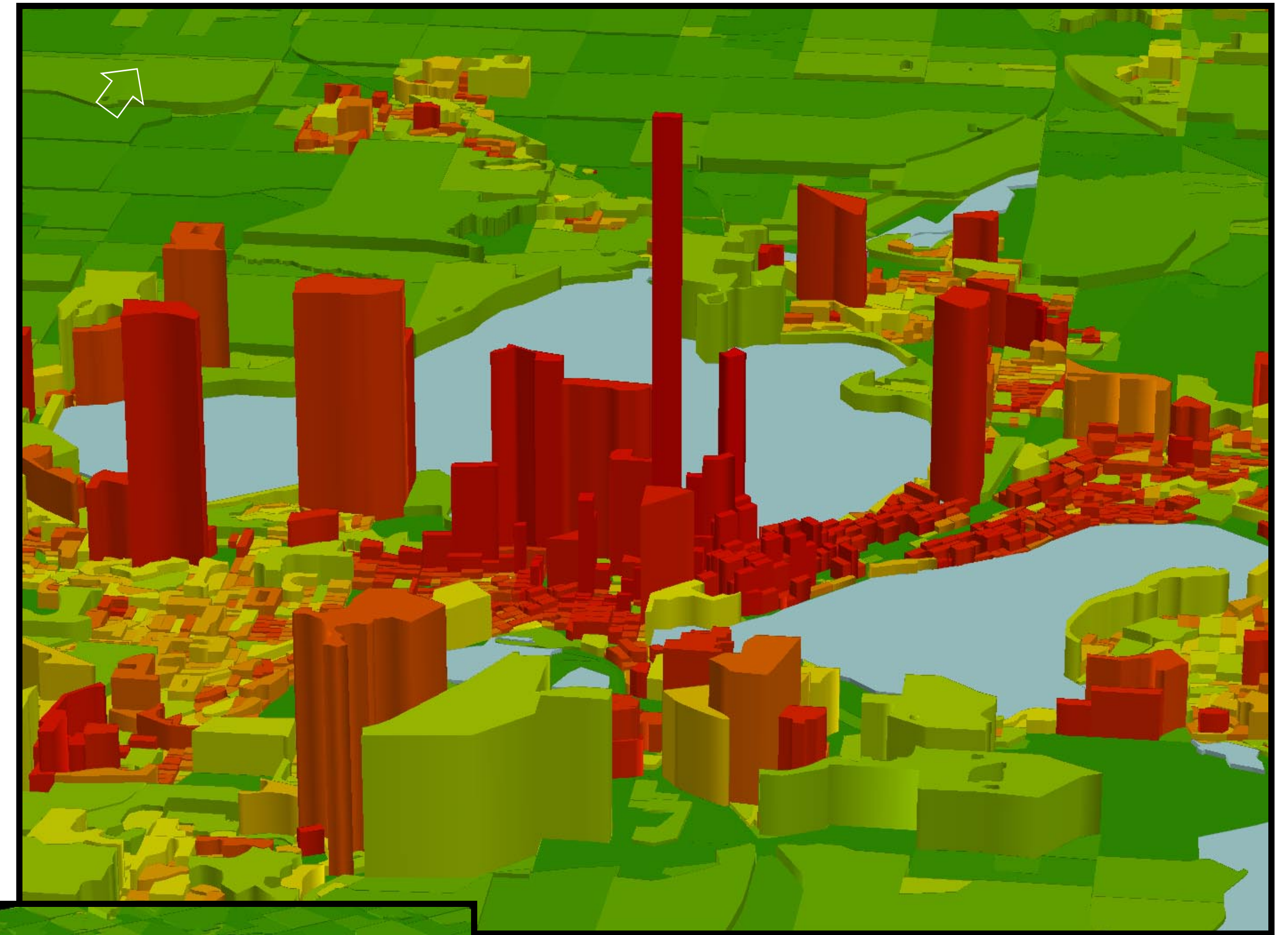
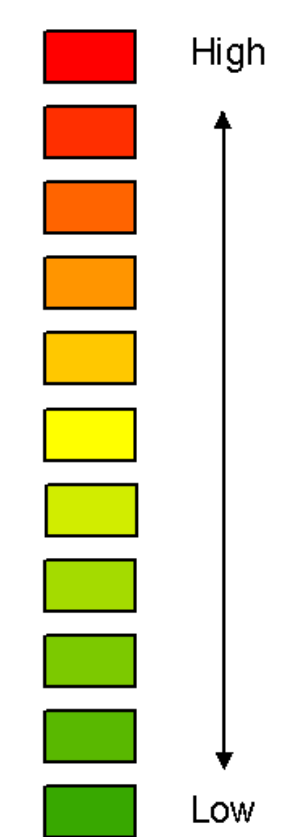


# 2000 Census Total Population and Population Density

Madison and Dane  
County,  
Wisconsin



Population Density



## About This Map:

The year 2000 census blocks are shown as 3-D prisms where each prism has been extruded relative to total population. Each census block is also categorized by color based on population density. Density was calculated using total land area of the census block.

This mapping technique allows for comparison of two thematic data sets, in this case total population and population density.

Prepared by staff to the:



8/2001

Source:  
U.S. Census Bureau, 2000.