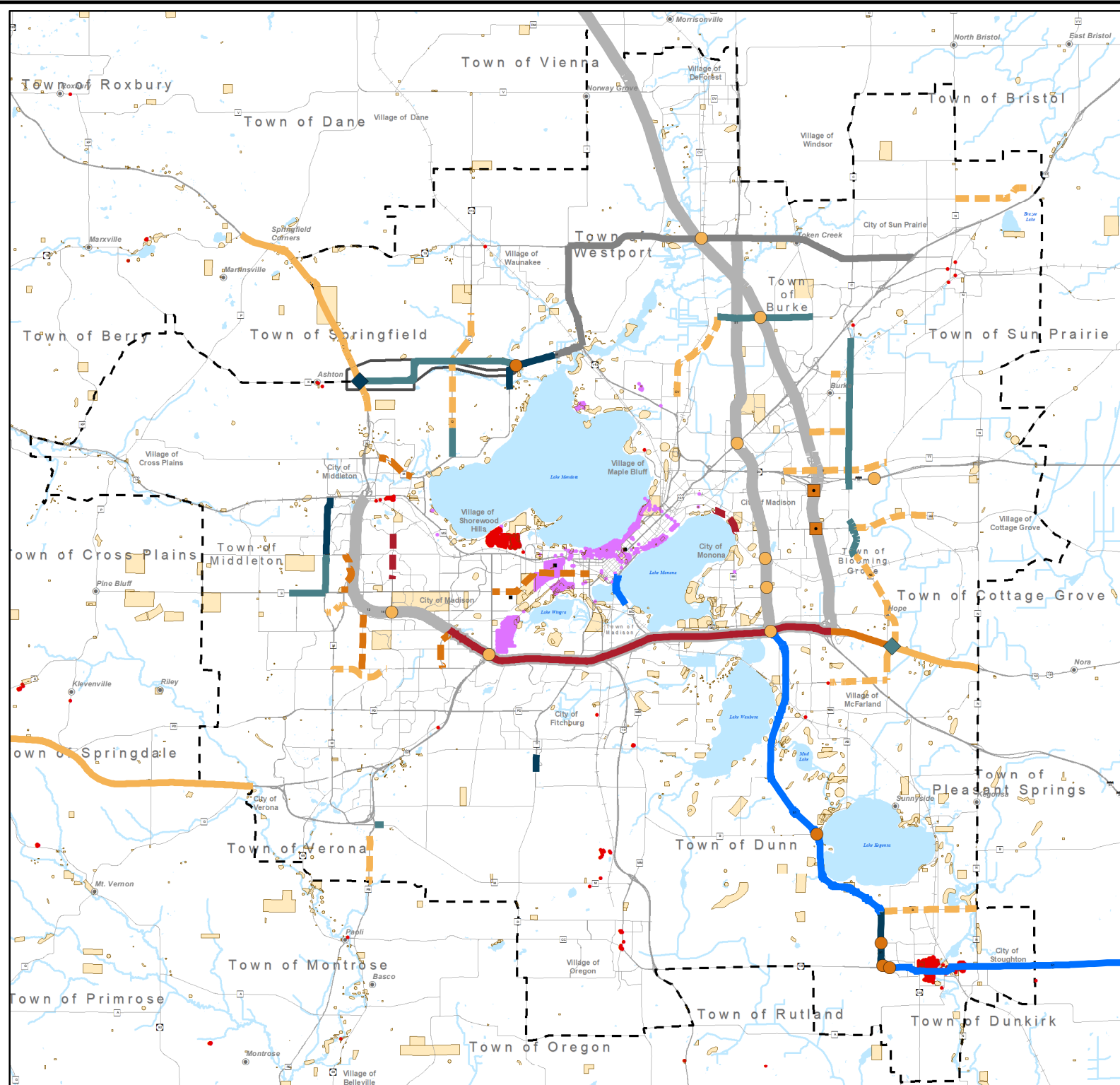


Major Roadway Projects and Studies shown with Historical and Archaeological Sites



- Bridge Capacity Expansion (Planned)
- Major Intersection Improvement (Programmed)
- ◆ New or Improved Interchange (Programmed)
- ◆ New or Improved Interchange (Planned)
- Study Potential Interchange or Intersection Improvement
- ▬ Freeway Capacity Expansion: Flex Lanes (Programmed)
- ▬ Freeway Conversion (Programmed)
- ▬ Official Map For Potential Freeway Conversion
- ▬ Major Arterial Roadway Reconstruction (Programmed)
- ▬ Arterial Roadway Capacity Expansion (Programmed)
- ▬ Arterial Roadway Capacity Expansion (Planned)
- ▬ Reserve ROW Official Map, Manage Access
- ▬ Arterial Roadway Capacity Reduction (Programmed or Planned)
- ▬ Study Potential Capacity Reduction
- ▬ Major Corridor Studies (Recommended)
- ▬ Major Corridor Studies (Current)*
- Potentially On New Alignment

Architecture and History Inventory (AHI)

- Dane County Historical Site
- Madison Historical Site
- MPO Boundary

Archaeological Sites Inventory (ASI)

- Archaeological and Burial Sites
- ▬ Perennial Stream
- Open Water

* Improvements Pending EIS and Funding

Prepared by staff to the:

 Date Revised: 3/10/2022