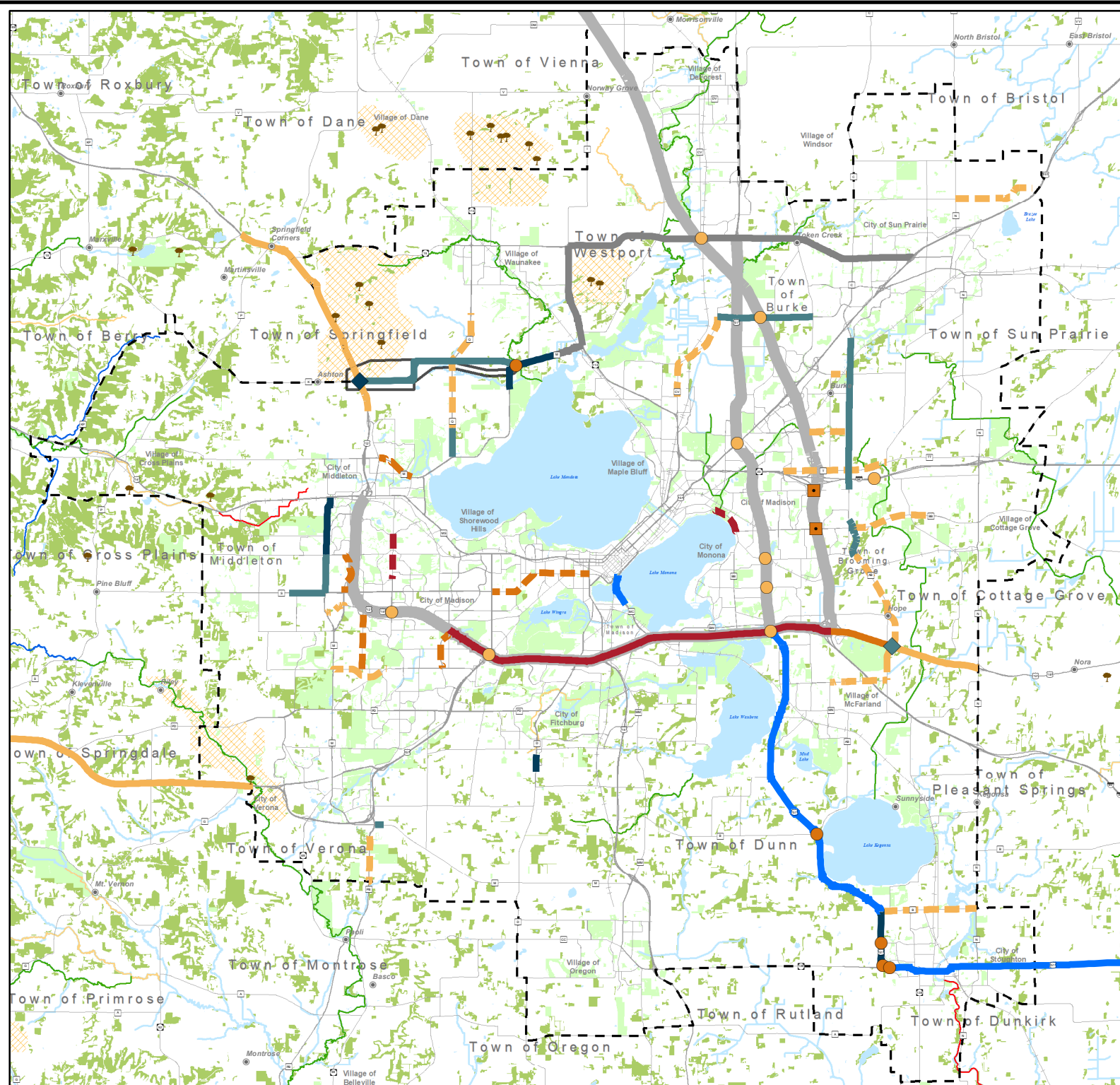


# Major Roadway Projects and Studies shown with Woodlands and Stream Water Assessments



- Bridge Capacity Expansion (Planned)
- Major Intersection Improvement (Programmed)
- ◆ New or Improved Interchange (Programmed)
- ◆ New or Improved Interchange (Planned)
- Study Potential Interchange or Intersection Improvement
- Freeway Capacity Expansion: Flex Lanes (Programmed)
- Freeway Conversion (Programmed)
- - - Official Map For Potential Freeway Conversion
- Major Arterial Roadway Reconstruction (Programmed)
- Arterial Roadway Capacity Expansion (Programmed)
- Arterial Roadway Capacity Expansion (Planned)
- - - Reserve ROW Official Map, Manage Access
- - - Arterial Roadway Capacity Reduction (Programmed or Planned)
- - - Study Potential Capacity Reduction
- Major Corridor Studies (Recommended)
- Major Corridor Studies (Current)\*
- Potentially On New Alignment

- Unprotected Native Prairie and Savanna Remnants
- MPO Boundary

## Stream Water Assessments

- Excellent
- Fair
- Good
- Poor

- Open Water
- Outdoor Recreation
- Woodland
- Unprotected Grassland Areas

\* Improvements Pending EIS and Funding

Prepared by staff to the:  
  
 Date Revised: 3/10/2022

Source Info: 2022 (MPO), Major Projects: 2022 (MPO), Street Base: 2021 (MPO/DCLD), Hydrography: 1200, 1:24,000 (WDNR), MPO Boundary: 2013 (MPO), Native Prairie, Savanna Remnants, Grasslands: 2012 (Dane County Parks), Woodlands: 2015, Land Use Inventory (CARPC), Recreation: 2015, Land Use Inventory (CARPC), Stream Water Assessments: 2016 (WDNR), [www.mpo-wisconsin.gov](#)  
 Path: \\MPO\_GIS\GIS\Users\Chen\_S\Map\1717\RTF\_2022\_UFGH\_Review\RTF\_2022\_PlanMap\_Woodland.jpg.mxd  
 Lambert Conformal Conic Projection  
 WGS84 - Dane, NAD 83(91)