

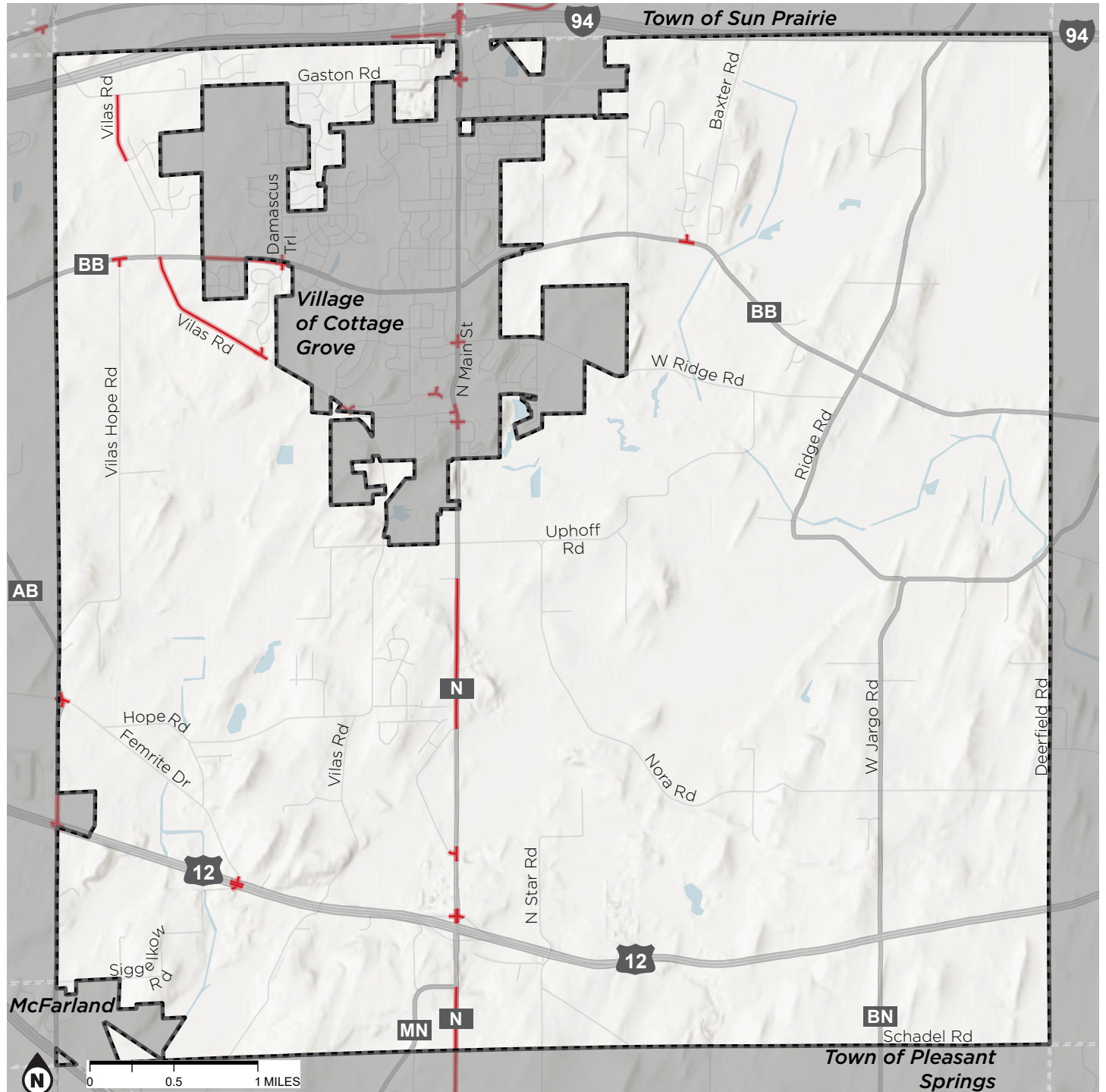
# Appendix 5 - HIN by Municipality

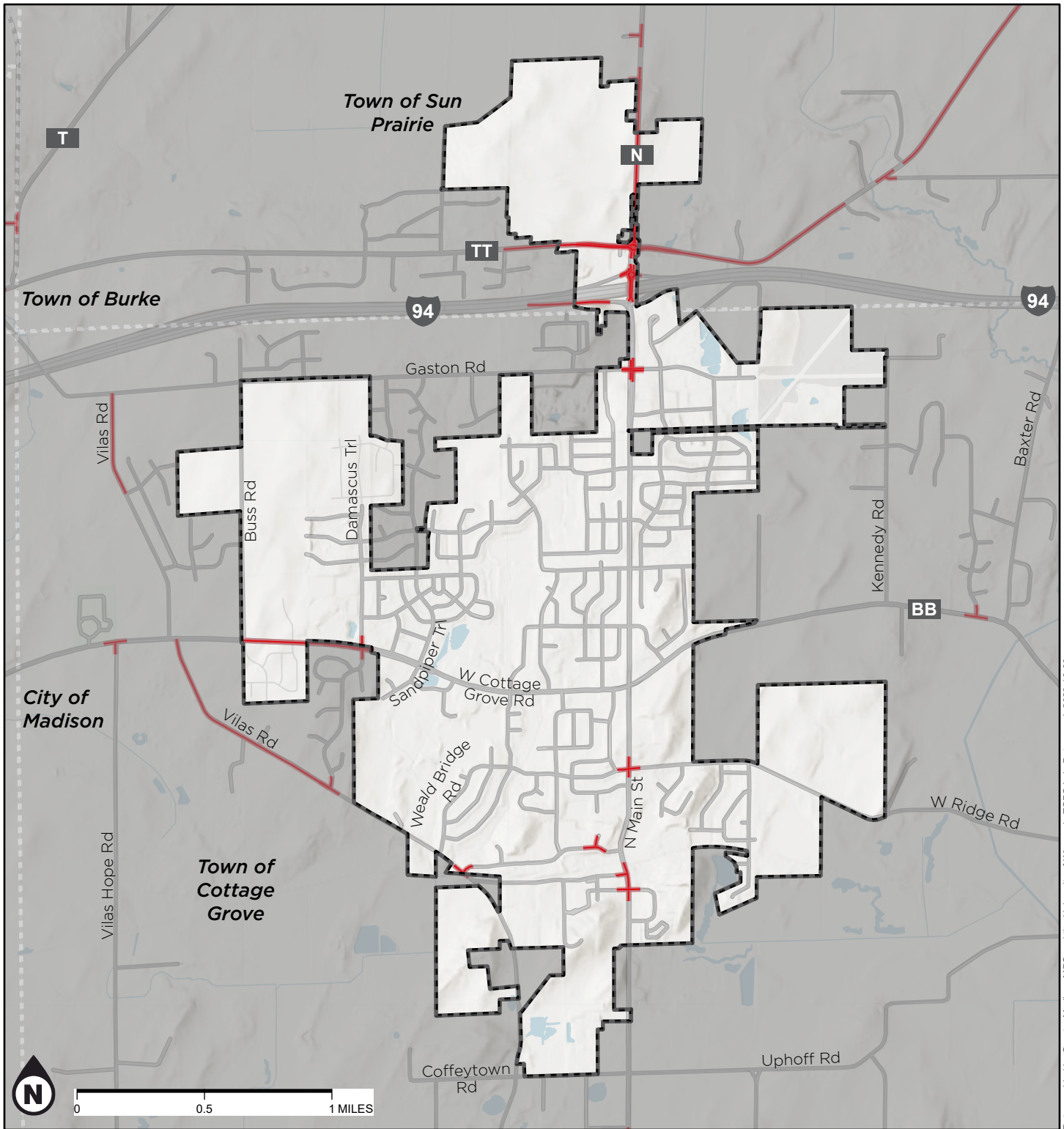
# TOWN OF COTTAGE GROVE HIN (2017-2020) SEGMENTS AND INTERSECTIONS

MADISON MPO  
SAFETY ACTION PLAN

## HIGH INJURY NETWORK

- HIN Roadway or Intersection Segment
- City, Village, or Town
- Tier 1 or Tier 2 EJ Area





Data provided by Greater Madison MPO and the University of Wisconsin TOPS Lab. Date saved: 2023-10-06.

# VILLAGE OF COTTAGE GROVE HIN (2017 - 2020) SEGMENTS AND INTERSECTIONS

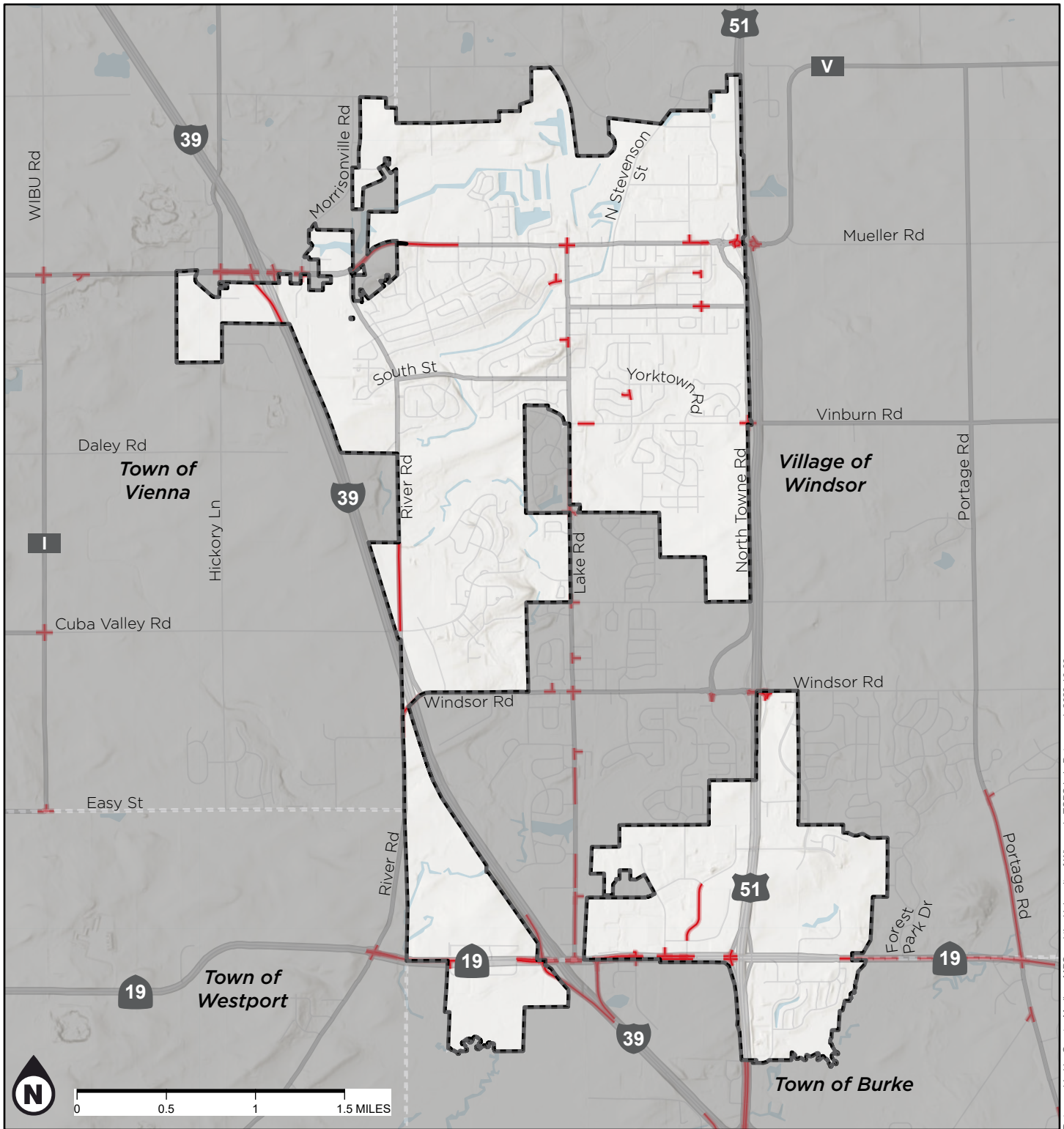
MADISON MPO  
SAFETY ACTION PLAN

HIGH INJURY NETWORK

City, Village, or Town

HIN Roadway or Intersection Segment





Data provided by Greater Madison MPO and the University of Wisconsin TOPS Lab. Date saved: 2023-10-06.

# VILLAGE OF DEFOREST HIN (2017 - 2020) SEGMENTS AND INTERSECTIONS

MADISON MPO  
SAFETY ACTION PLAN

HIGH INJURY NETWORK

 City, Village, or Town

 HIN Roadway or Intersection Segment

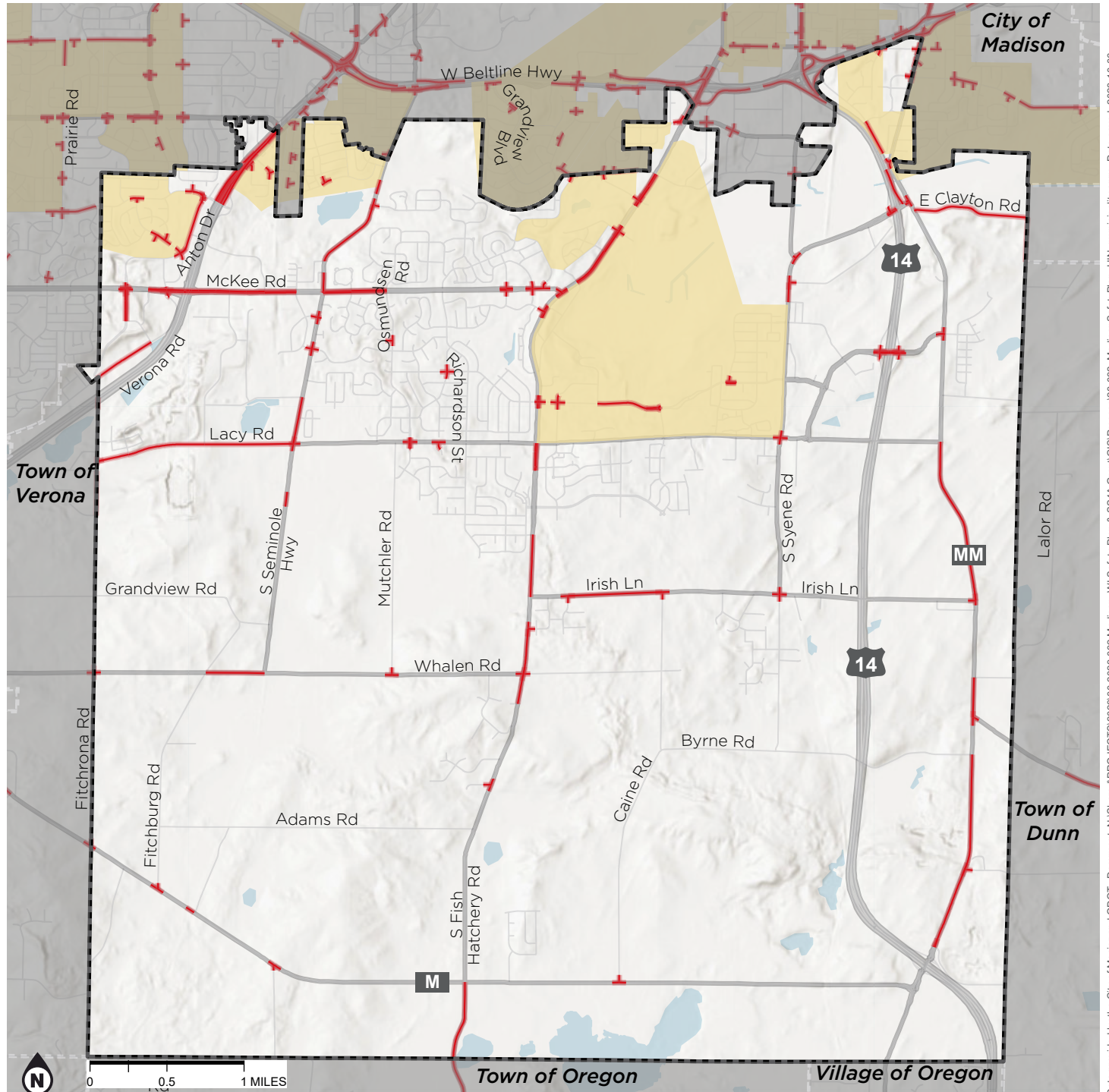


# CITY OF FITCHBURG HIN (2017-2020) SEGMENTS AND INTERSECTIONS

## MADISON MPO SAFETY ACTION PLAN

### HIGH INJURY NETWORK



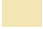
- HIN Roadway or Intersection Segment
- City, Village, or Town
- Tier 1 or Tier 2 EJ Area

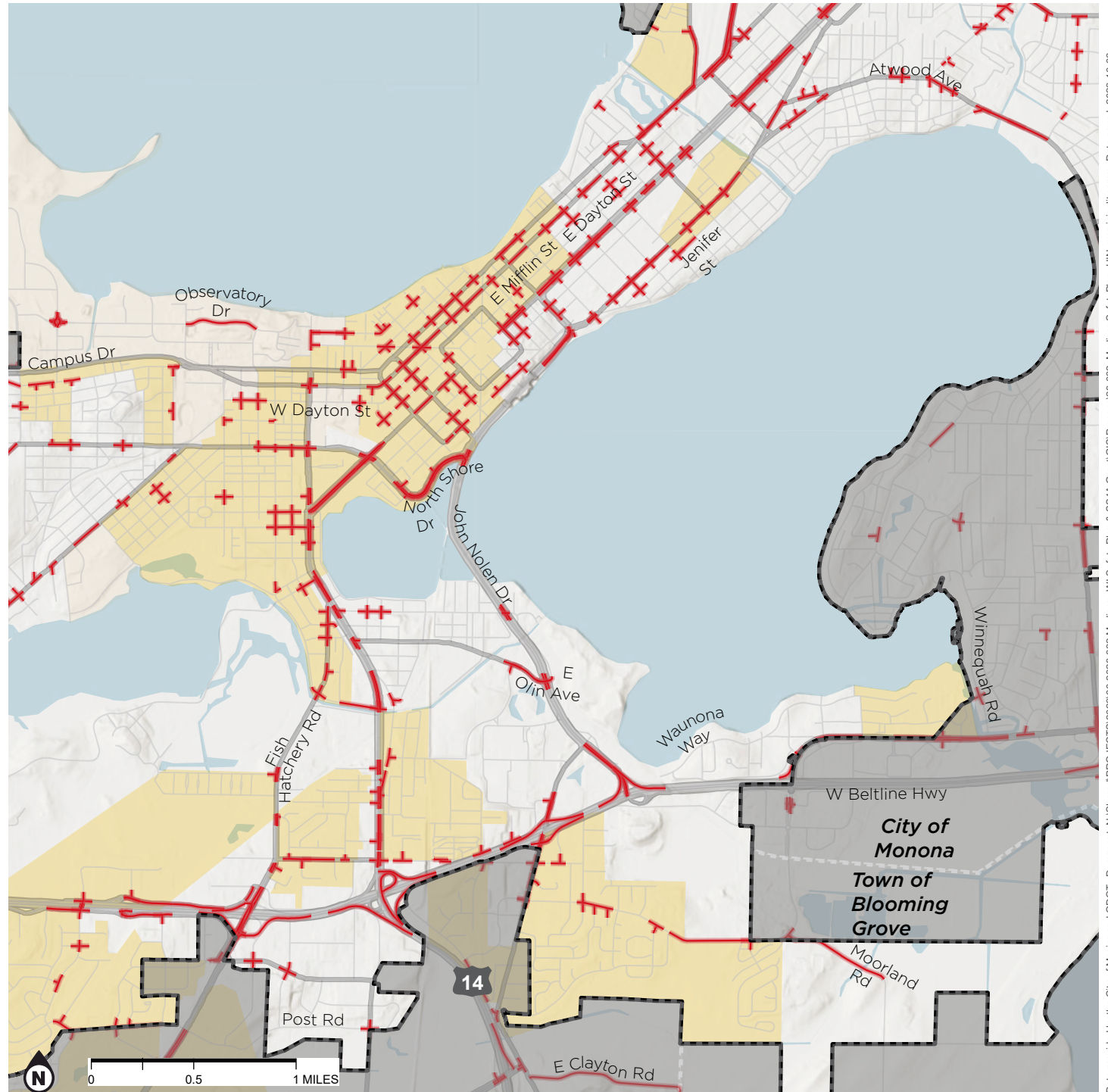


# CITY OF MADISON CENTRAL HIN (2017-2020) SEGMENTS AND INTERSECTIONS

## MADISON MPO SAFETY ACTION PLAN

### HIGH INJURY NETWORK

-  HIN Roadway or Intersection Segment
-  City, Village, or Town
-  Tier 1 or Tier 2 EJ Area



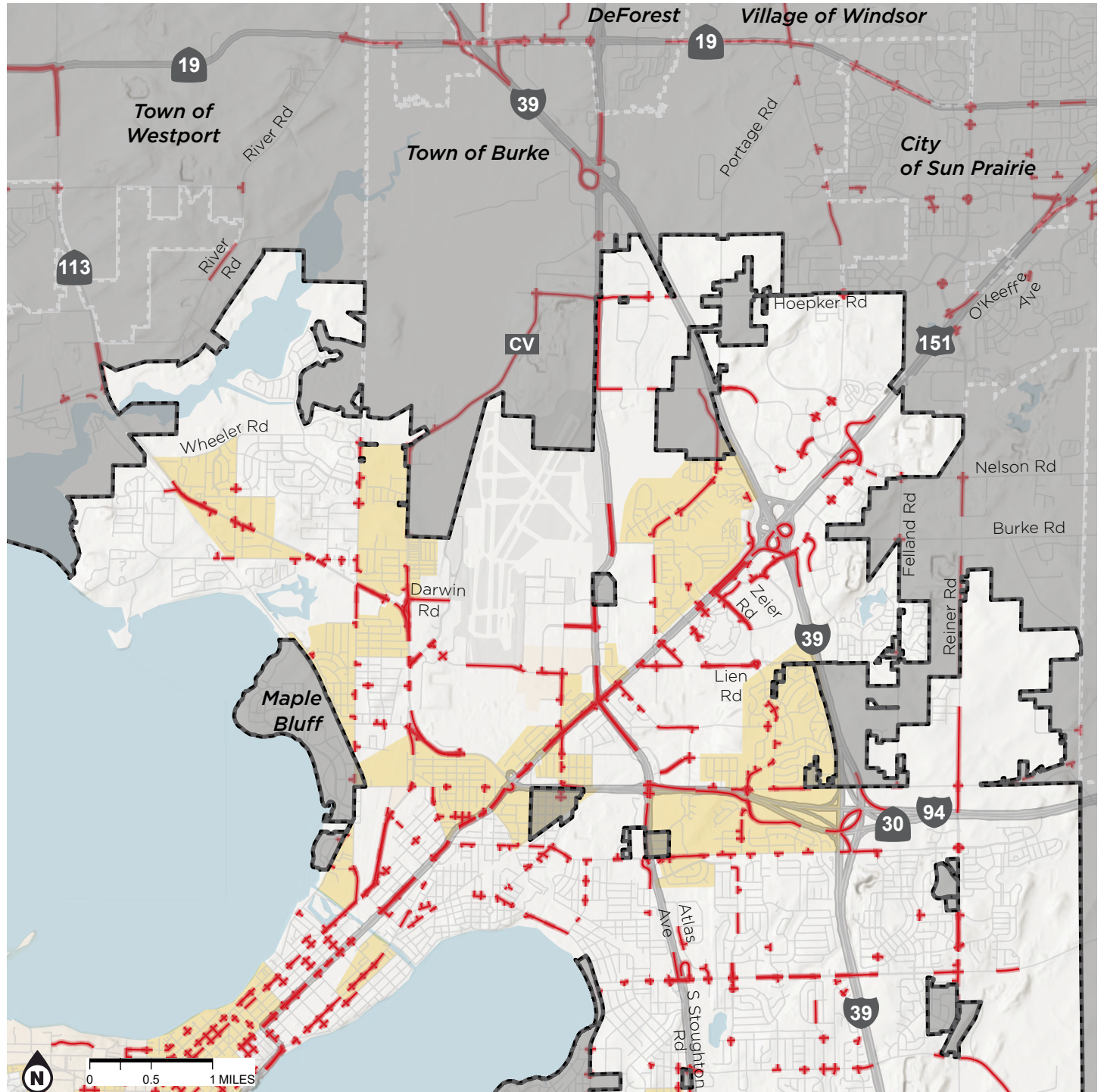
Data provided by the City of Mosler and ODOT. Document: N:\Shared\PROJECTS\2023\00-2023-032 Madison, WI Safety Plan & SS4A Grant\GIS\Process\23-032\_MadisonSafetyPlan\_HIN\_municipality.aprx. Date saved: 2023-10-06.

# CITY OF MADISON NORTHEAST HIN (2017-2020) SEGMENTS AND INTERSECTIONS

## MADISON MPO SAFETY ACTION PLAN

### HIGH INJURY NETWORK

- HIN Roadway or Intersection Segment
- City, Village, or Town
- Tier 1 or Tier 2 EJ Area

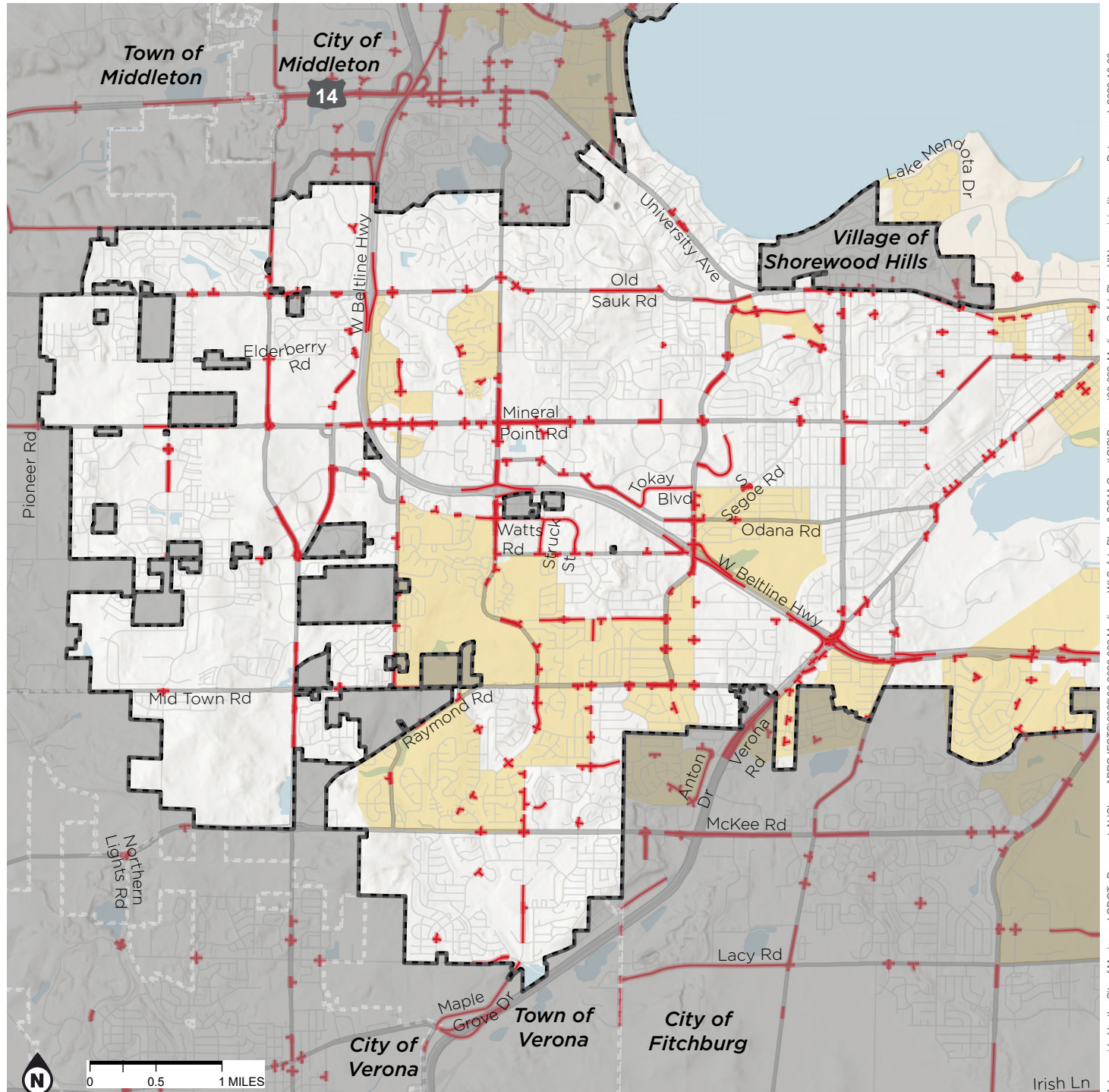


# CITY OF MADISON WEST HIN (2017-2020) SEGMENTS AND INTERSECTIONS

## MADISON MPO SAFETY ACTION PLAN

### HIGH INJURY NETWORK

- HIN Roadway or Intersection Segment
- City, Village, or Town
- Tier 1 or Tier 2 EJ Area



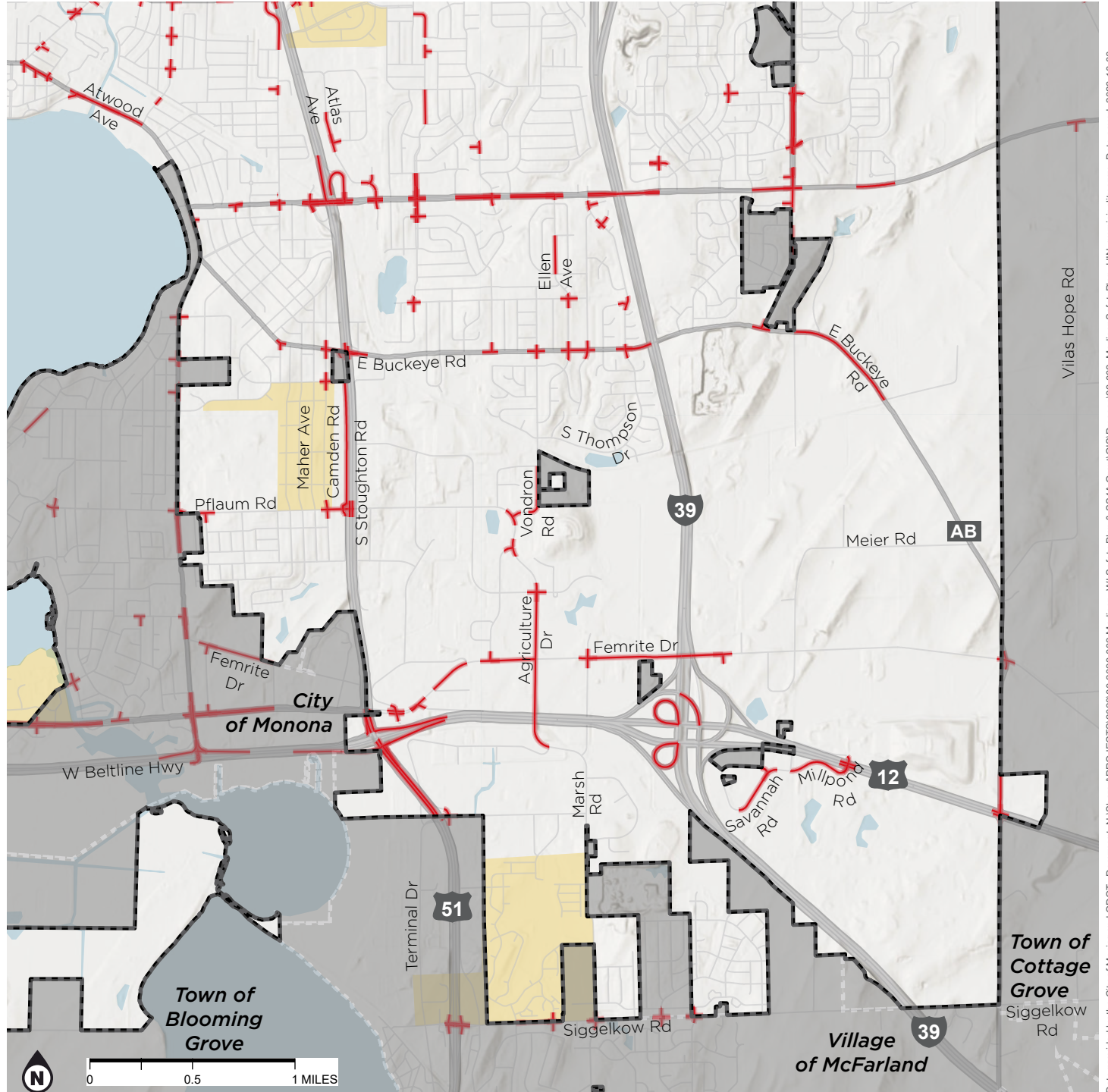


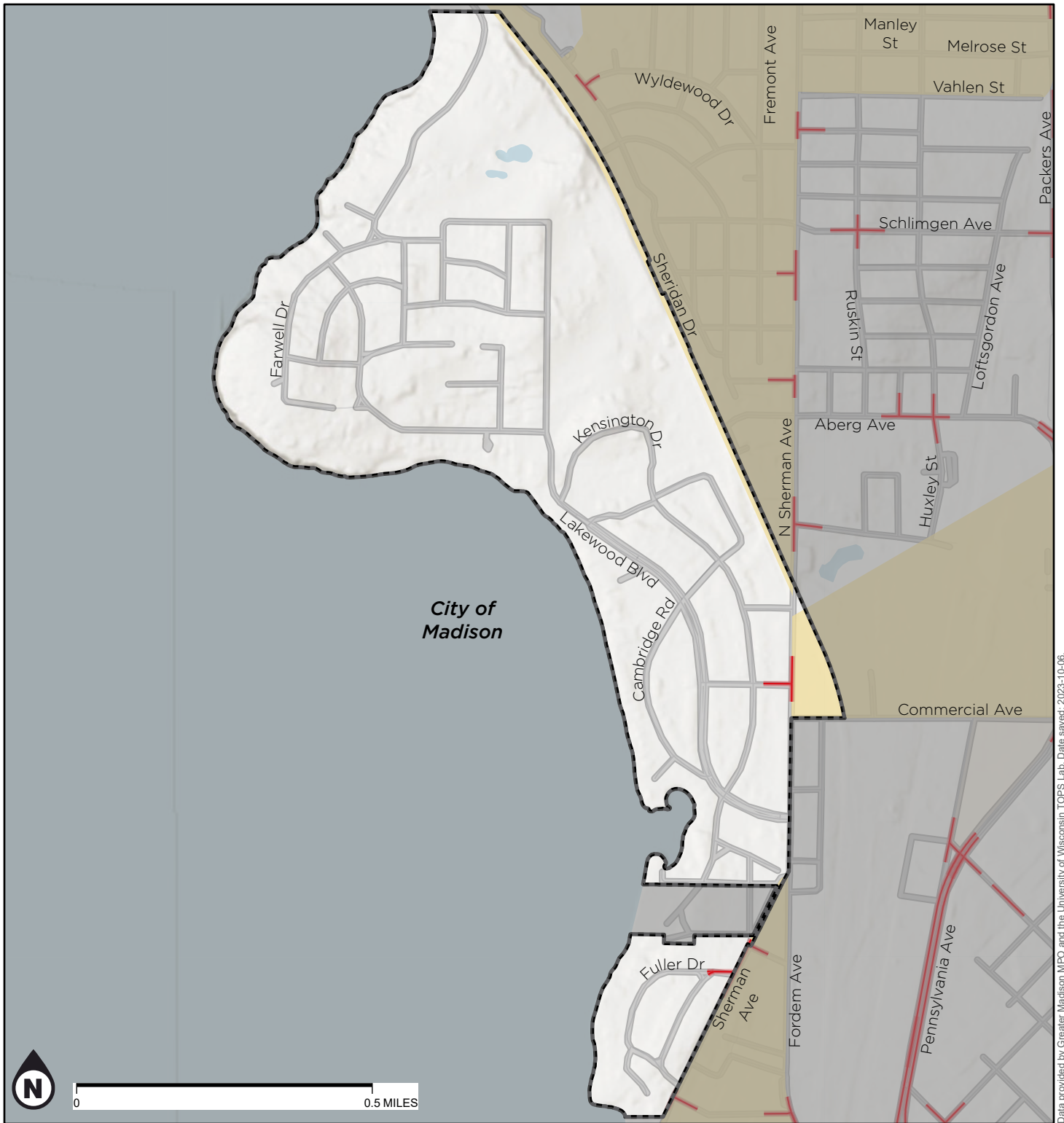
# CITY OF MADISON SOUTHEAST HIN (2017-2020) SEGMENTS AND INTERSECTIONS

## MADISON MPO SAFETY ACTION PLAN

### HIGH INJURY NETWORK

- HIN Roadway or Intersection Segment
- City, Village, or Town
- Tier 1 or Tier 2 EJ Area





## VILLAGE OF MAPLE BLUFF HIN (2017 - 2020) SEGMENTS AND INTERSECTIONS

MADISON MPO  
SAFETY ACTION PLAN

### HIGH INJURY NETWORK

- City, Village, or Town
- HIN Roadway or Intersection Segment
- Tier 1 or Tier 2 EJ Area

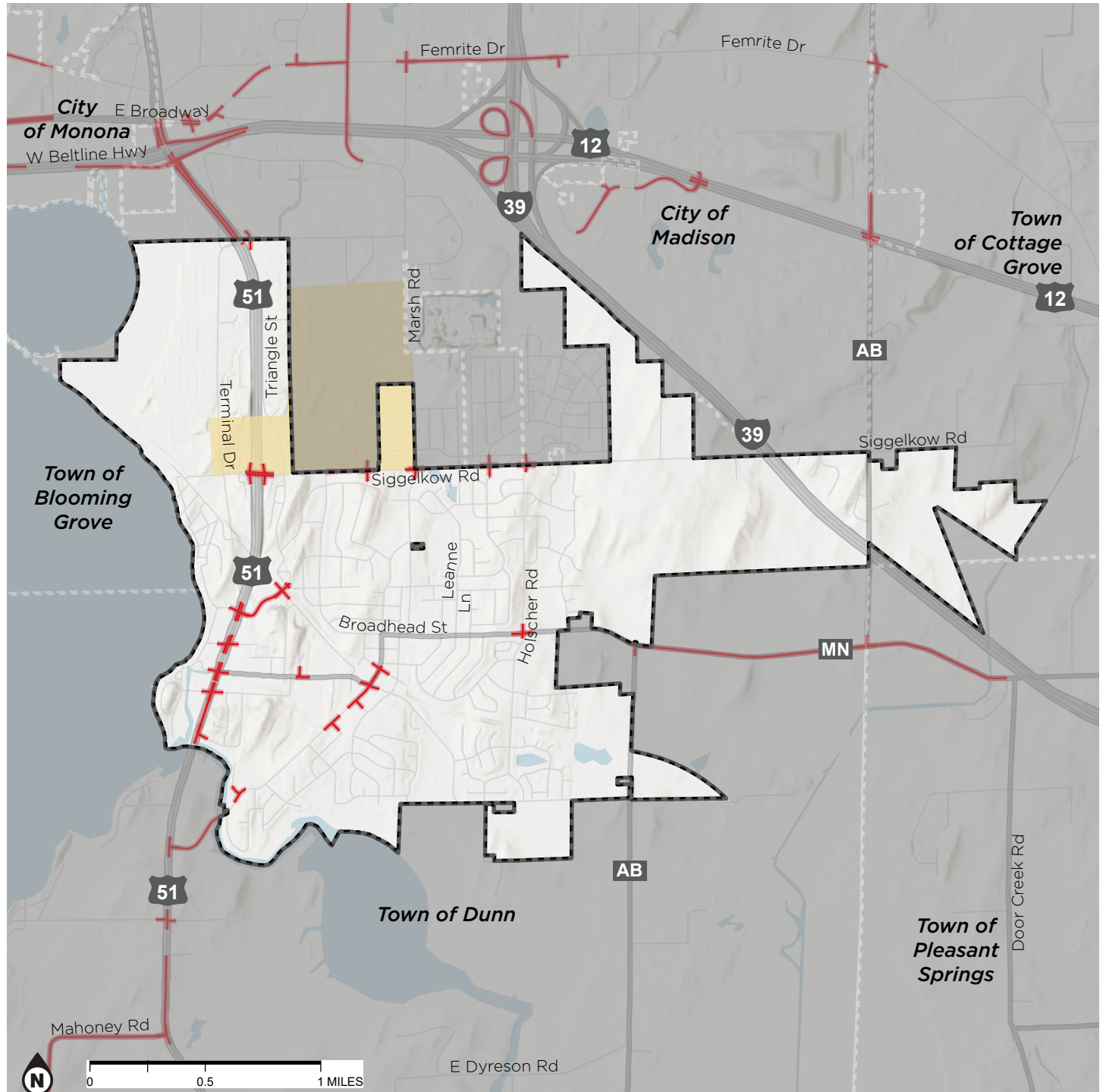


# VILLAGE OF MCFARLAND HIN (2017-2020) SEGMENTS AND INTERSECTIONS

## MADISON MPO SAFETY ACTION PLAN

### HIGH INJURY NETWORK

- HIN Roadway or Intersection Segment
- City, Village, or Town
- Tier 1 or Tier 2 EJ Area

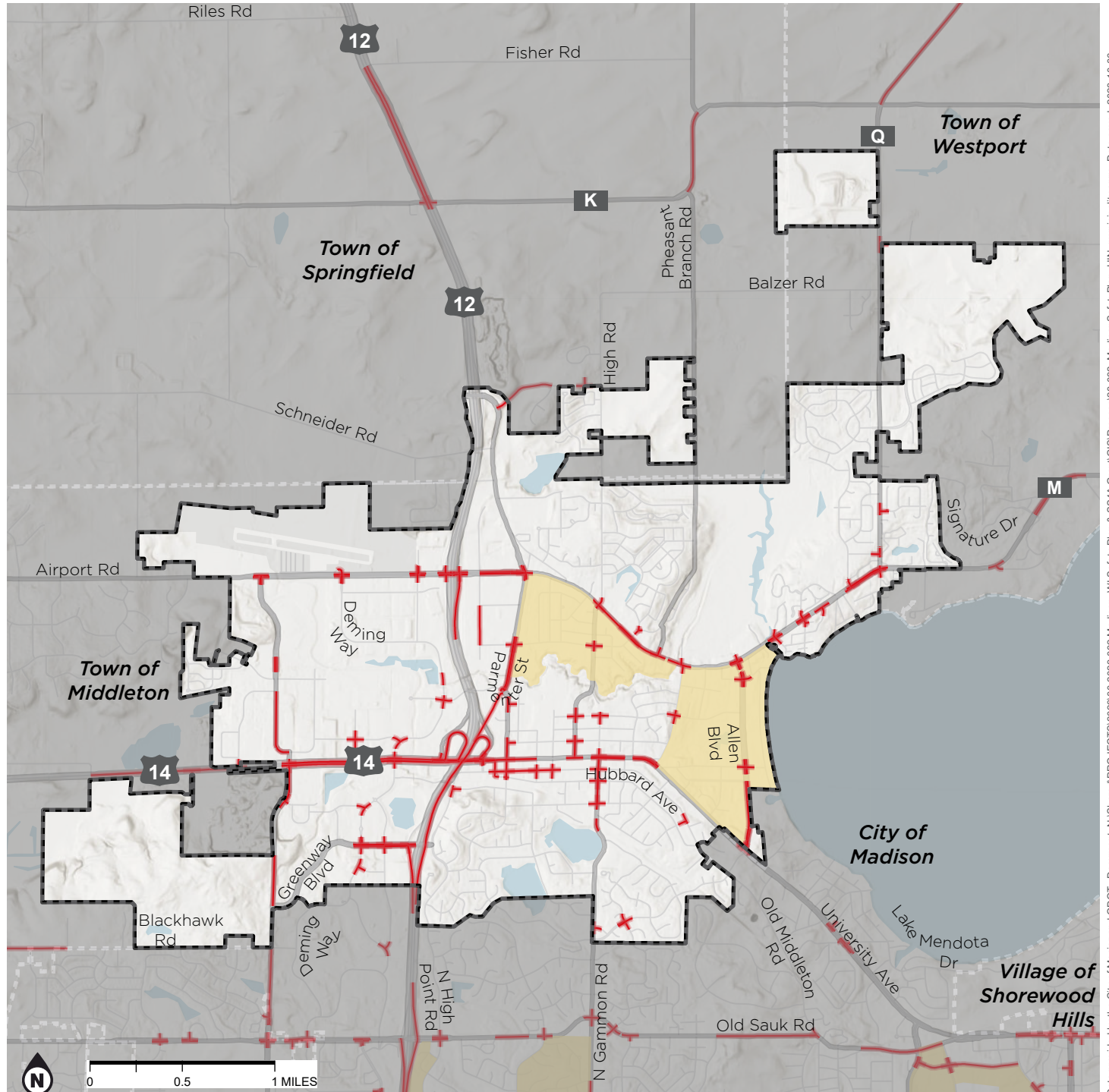


# CITY OF MIDDLETON HIN (2017-2020) SEGMENTS AND INTERSECTIONS

## MADISON MPO SAFETY ACTION PLAN

### HIGH INJURY NETWORK

- HIN Roadway or Intersection Segment
- City, Village, or Town
- Tier 1 or Tier 2 EJ Area

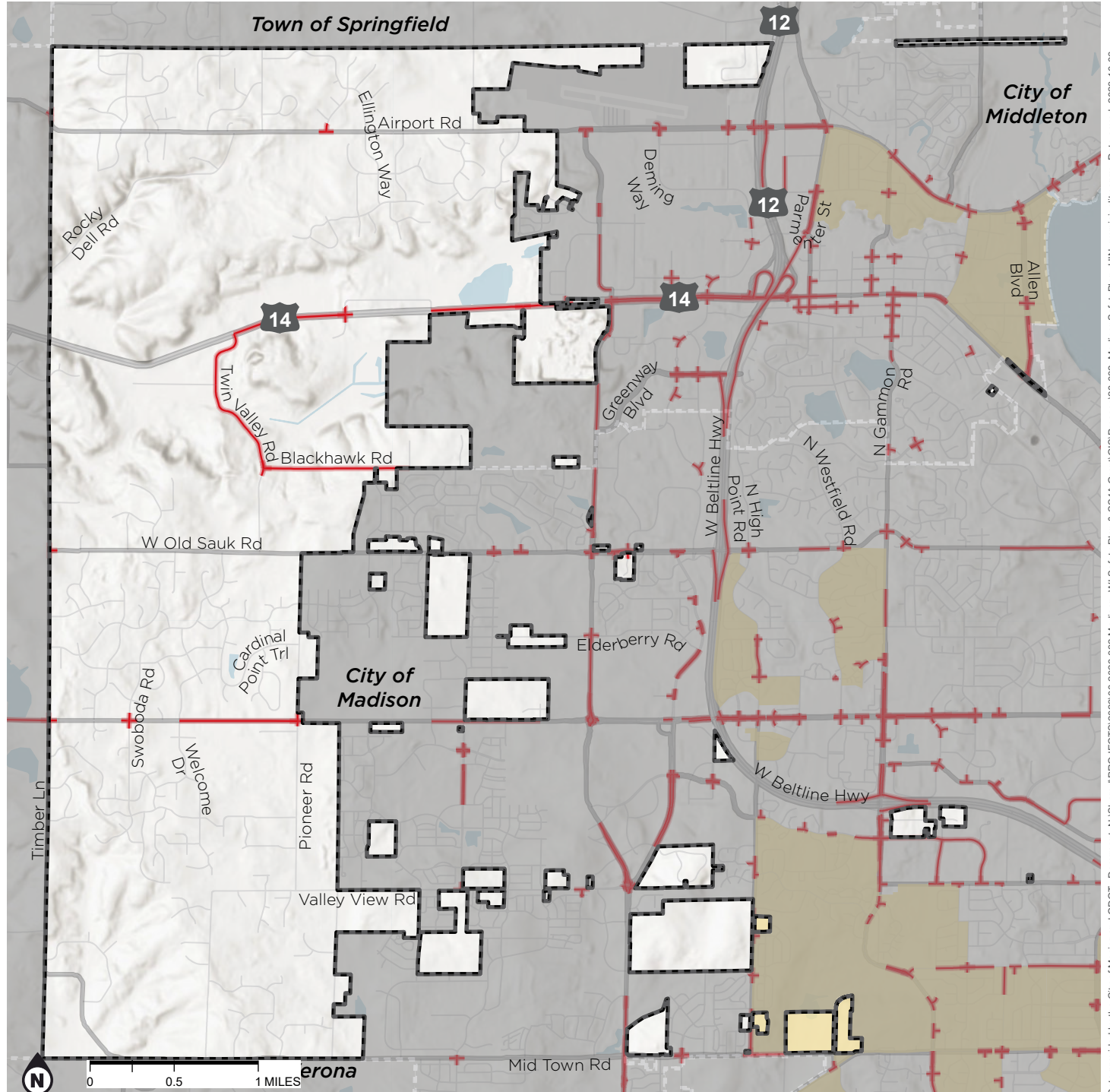


# TOWN OF MIDDLETON HIN (2017-2020) SEGMENTS AND INTERSECTIONS

## MADISON MPO SAFETY ACTION PLAN

### HIGH INJURY NETWORK

- HIN Roadway or Intersection Segment
- City, Village, or Town
- Tier 1 or Tier 2 EJ Area





Data provided by Greater Madison MPO and the University of Wisconsin TOPS Lab. Date saved: 2023-10-06.

# CITY OF MONONA HIN (2017 - 2020) SEGMENTS AND INTERSECTIONS

MADISON MPO  
SAFETY ACTION PLAN

## HIGH INJURY NETWORK

- City, Village, or Town
- HIN Roadway or Intersection Segment
- Tier 1 or Tier 2 EJ Area

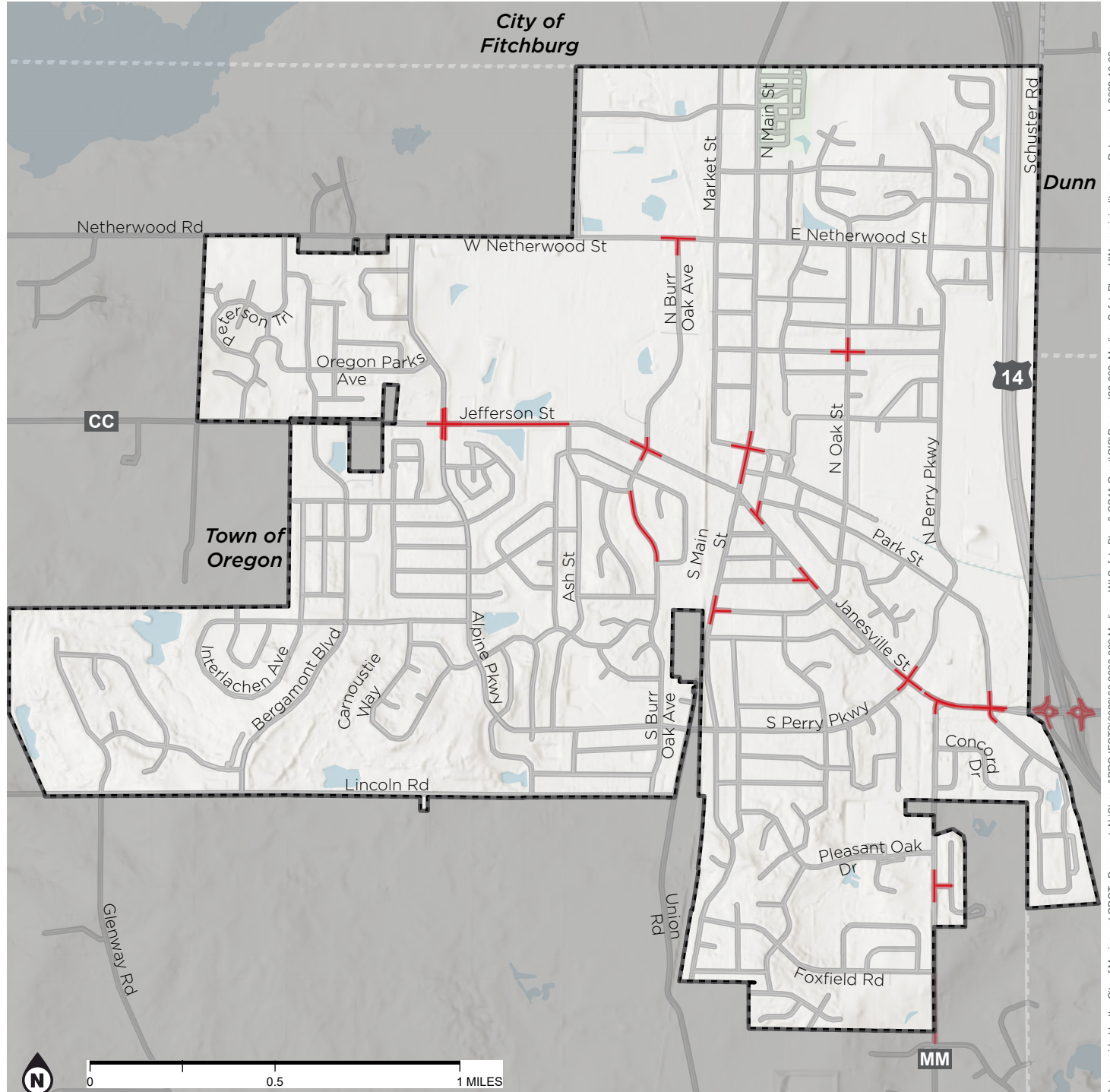


# VILLAGE OF OREGON HIN (2017-2020) SEGMENTS AND INTERSECTIONS

## MADISON MPO SAFETY ACTION PLAN

### HIGH INJURY NETWORK

- HIN Roadway or Intersection Segment
- City, Village, or Town
- Tier 1 or Tier 2 EJ Area

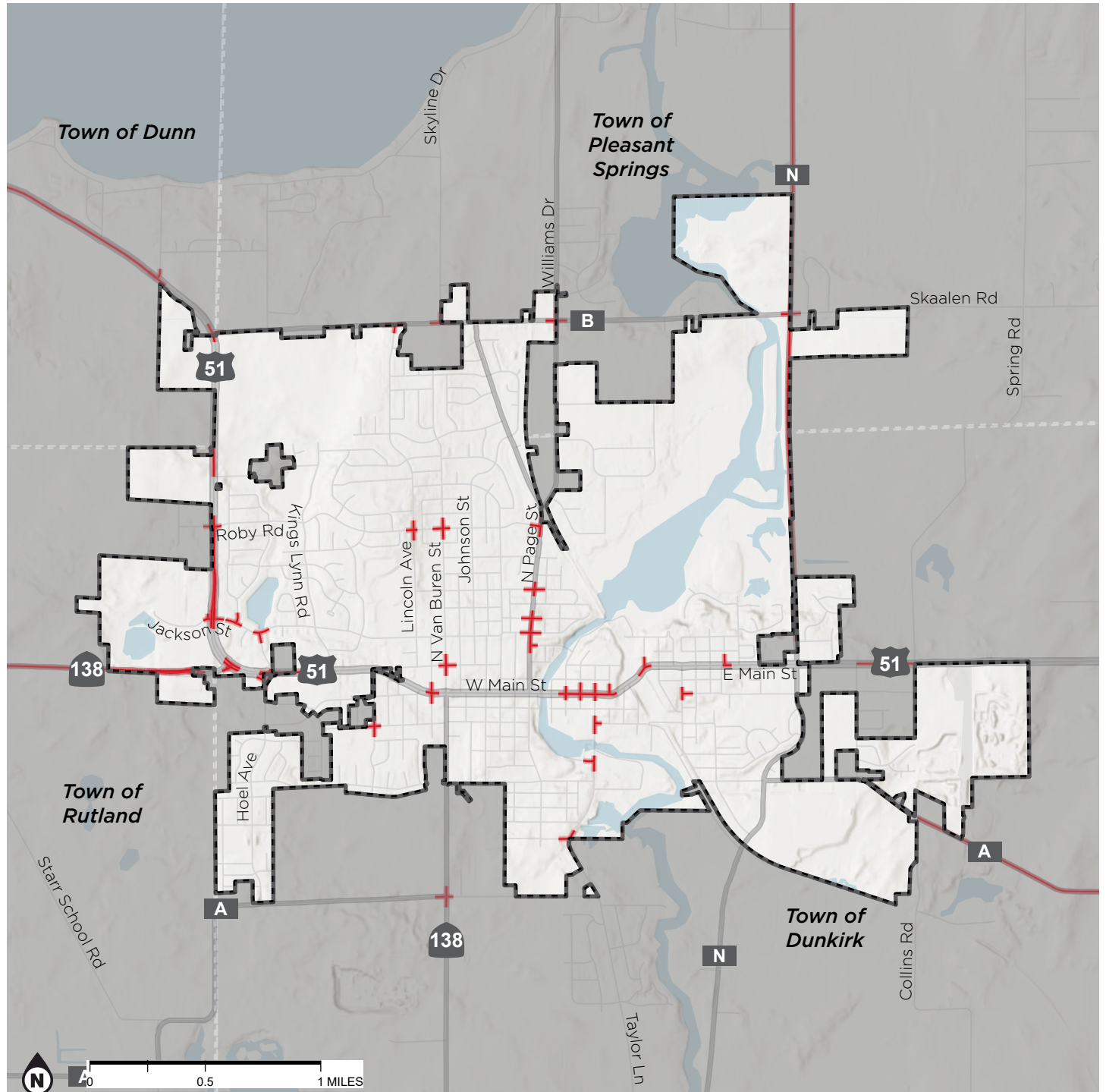


# CITY OF STOUGHTON HIN (2017-2020) SEGMENTS AND INTERSECTIONS

## MADISON MPO SAFETY ACTION PLAN

### HIGH INJURY NETWORK

- HIN Roadway or Intersection Segment
- City, Village, or Town
- Tier 1 or Tier 2 EJ Area



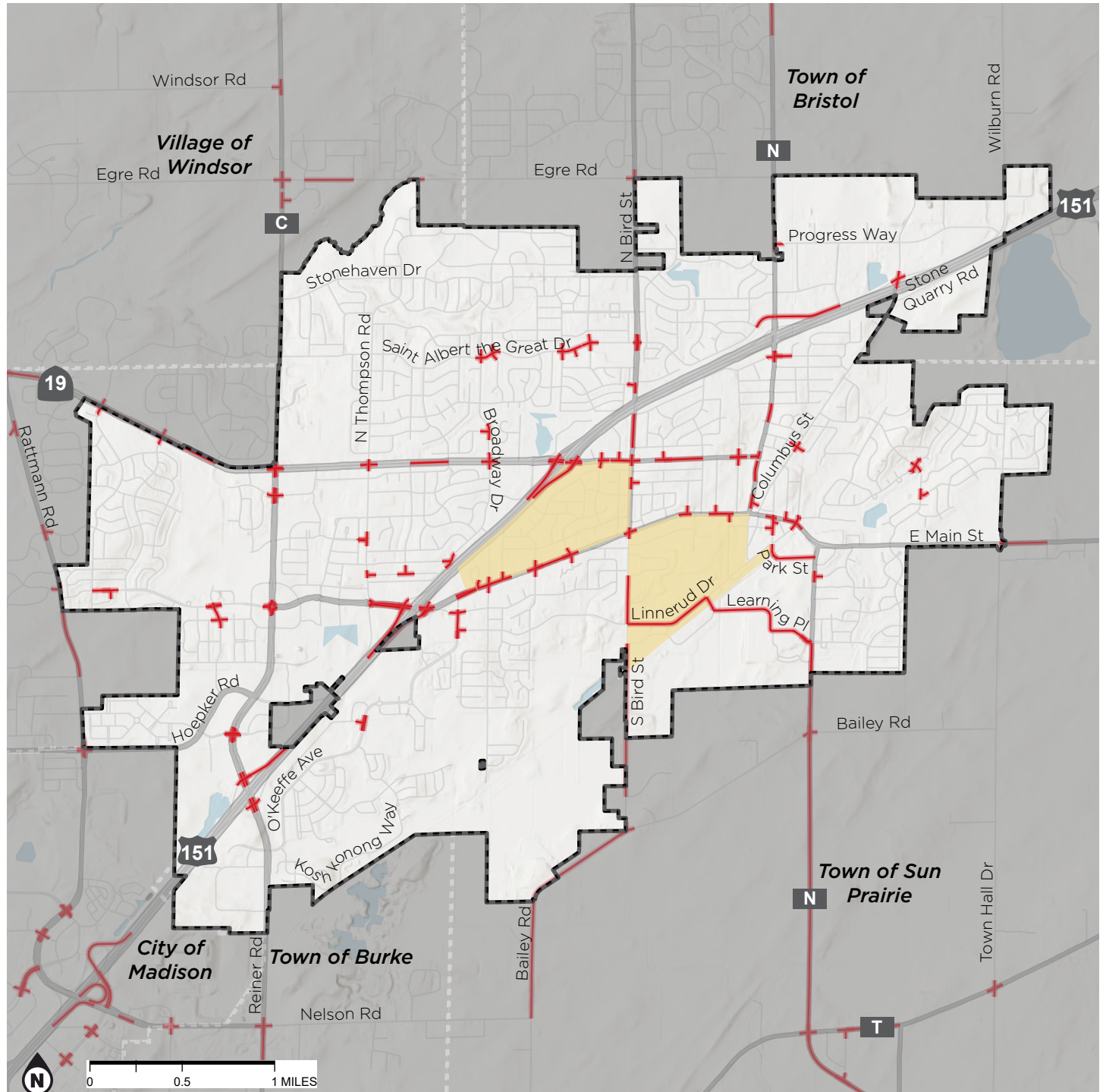


# CITY OF SUN PRAIRIE HIN (2017-2020) SEGMENTS AND INTERSECTIONS

## MADISON MPO SAFETY ACTION PLAN

### HIGH INJURY NETWORK

- HIN Roadway or Intersection Segment
- City, Village, or Town
- Tier 1 or Tier 2 EJ Area

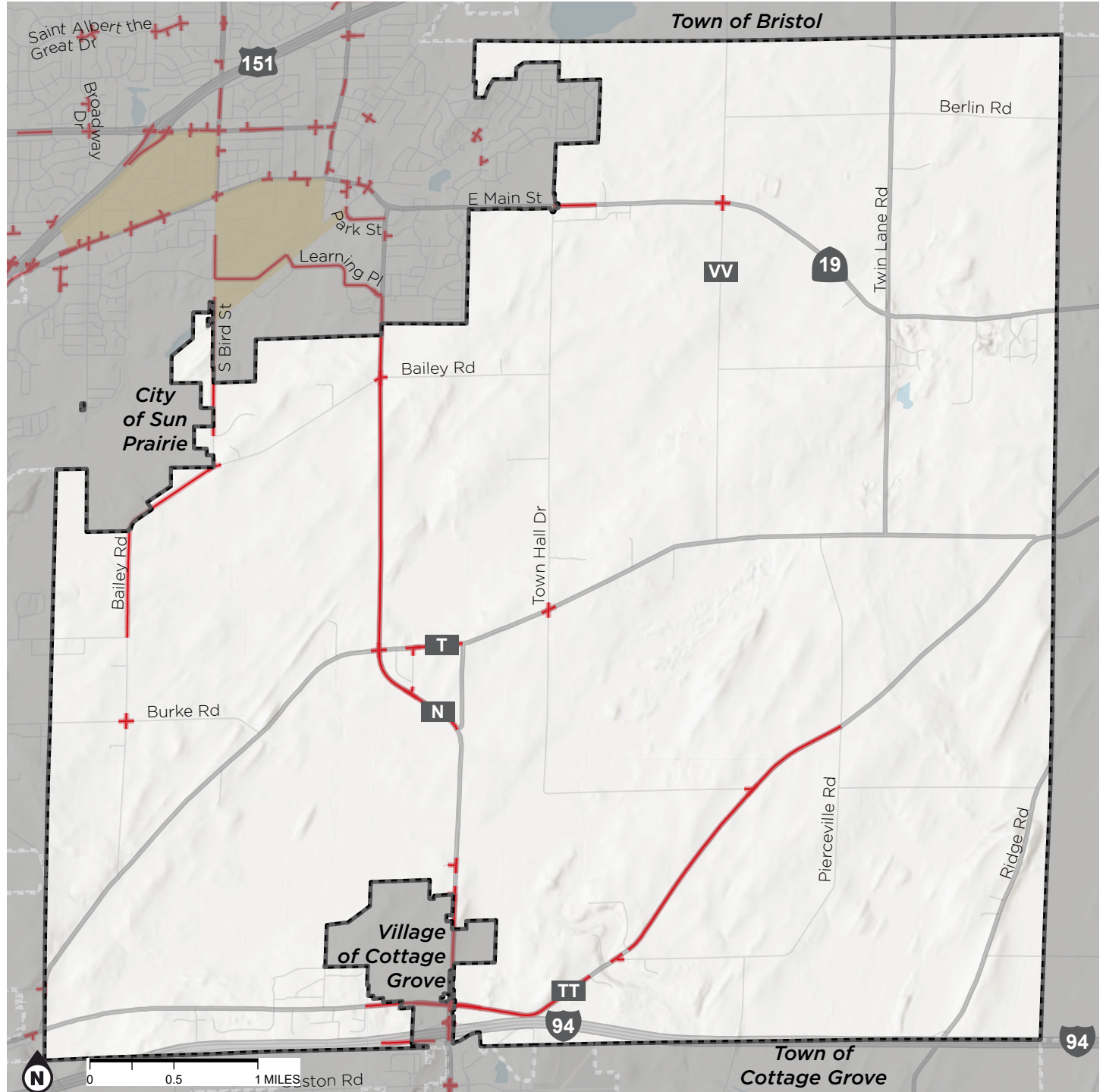


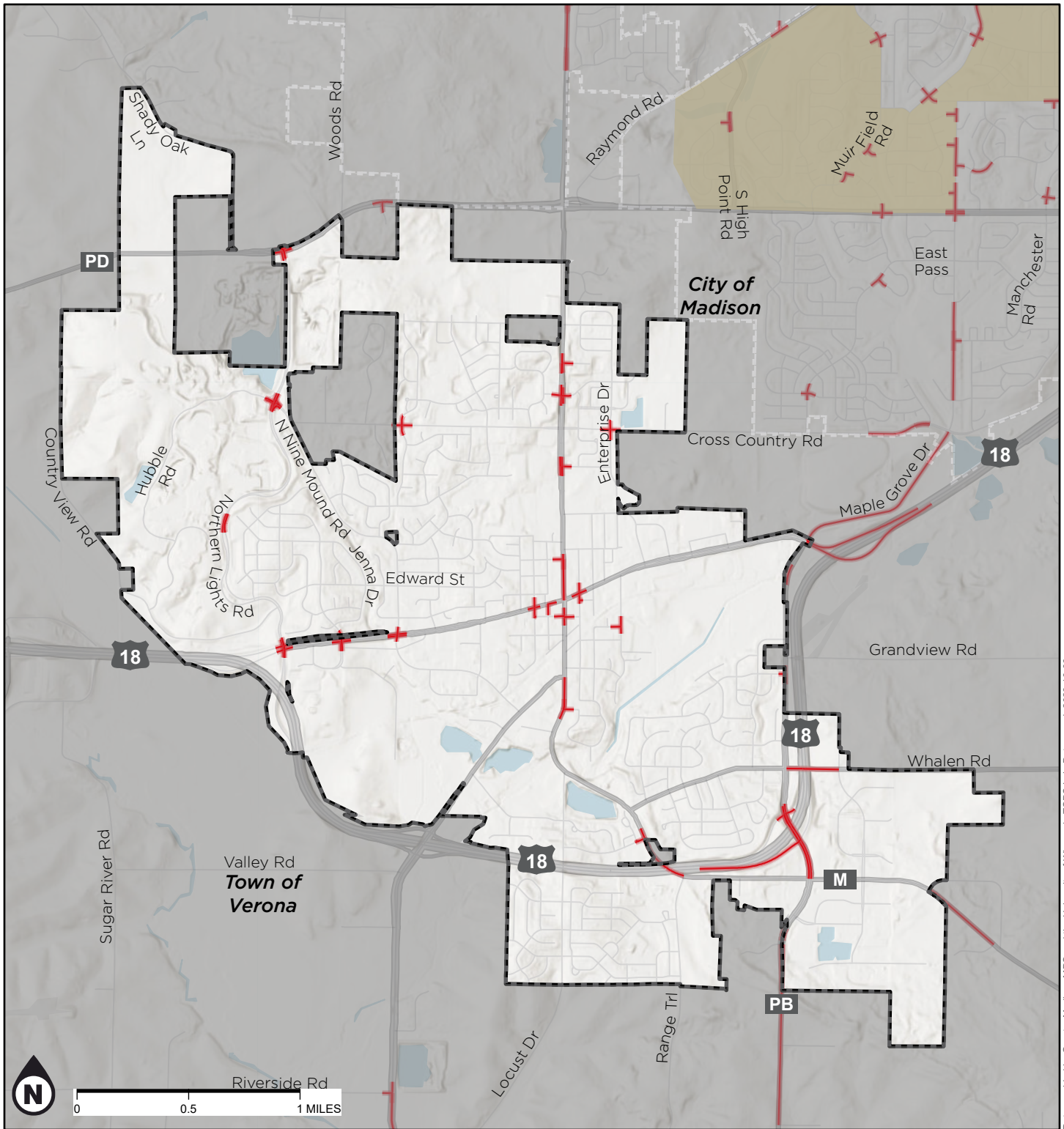
# TOWN OF SUN PRAIRIE HIN (2017-2020) SEGMENTS AND INTERSECTIONS

## MADISON MPO SAFETY ACTION PLAN

### HIGH INJURY NETWORK

- HIN Roadway or Intersection Segment
- City, Village, or Town
- Tier 1 or Tier 2 EJ Area





Data provided by Greater Madison MPO and the University of Wisconsin TOPS Lab. Date saved: 2023-10-06.

# CITY OF VERONA HIN (2017 - 2020) SEGMENTS AND INTERSECTIONS

MADISON MPO  
SAFETY ACTION PLAN

## HIGH INJURY NETWORK

- City, Village, or Town
- HIN Roadway or Intersection Segment

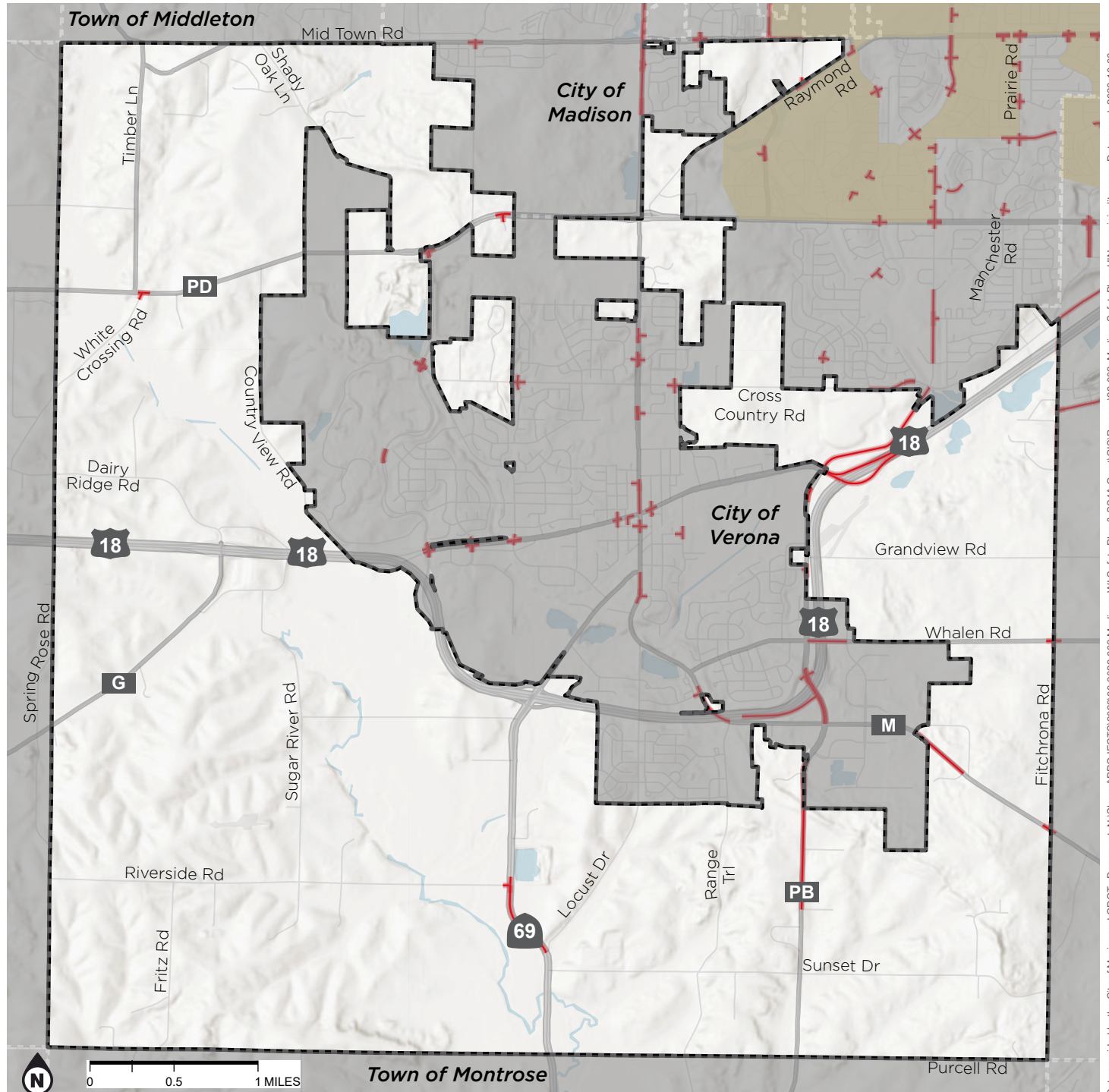


# TOWN OF VERONA HIN (2017-2020) SEGMENTS AND INTERSECTIONS

## MADISON MPO SAFETY ACTION PLAN

### HIGH INJURY NETWORK

- HIN Roadway or Intersection Segment
- City, Village, or Town
- Tier 1 or Tier 2 EJ Area



# VILLAGE OF WAUNAKEE HIN (2017-2020) SEGMENTS AND INTERSECTIONS

## MADISON MPO SAFETY ACTION PLAN

### HIGH INJURY NETWORK

- HIN Roadway or Intersection Segment
- City, Village, or Town
- Tier 1 or Tier 2 EJ Area

